



THE ENGLISH-SPEAKING UNION OF THE UNITED STATES
Education. Scholarship. Understanding.

CENTRAL FLORIDA

BRANCH NEWS

P.O. Box 758, Winter Park, FL 32790-0758
Website: www.ESUus.org/centralflorida
Email: centralfl@ESUus.org

December 2019
Issue #4 - 2019-2020

President:

Barbara W. Hughes

Executive VP:

Socky O'Sullivan

Vice Presidents:

Jan McClure

Gilda Gomez

Reta Jackson

Ginger Bryant

Treasurer:

Jackie Abrams

Asst. Treasurer:

Open

Secretary:

Deborah Williams

Past President:

Frank Paul Barber

Advisory Council:

Diane Sandquist

ESU National Board

Member:

Donna Miller

Parliamentarian:

Kenneth Hubble

Directors:

(2019-20)

Michael Kakos

Max Reed

Robert White

(2019-21)

Brett Carrier

Elaine Laegeler

Curt Dedge

(2019-22)

Reta Jackson

Ginger Bryant

Sheri Hjelm

National Patrons:

Vice Chairman's Circle

Donna Miller

Sponsor

Elizabeth Brothers

Michael and Aimee Kakos

Donor

Barbara W. Hughes

Loreta R. Jackson

Mr. and Mrs.

Kenneth D. McArthur

Lisa Vimmerstedt

Monday, December 2 Program 3:30 p.m. - The University Club of Winter Park



The English-Speaking Union
Central Florida Branch

Lynn Schiffhorst

When Ruthless Power Collides With Art

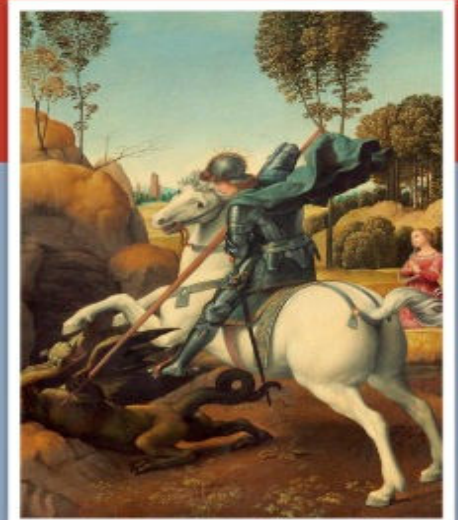
The Story Behind One of the World's Greatest Paintings

Monday
December

02

3:30pm

The University Club
of Winter Park

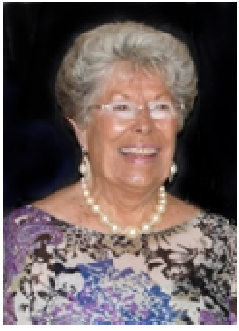


Raphael's painting of St. George and the Dragon is one of the crown jewels in the National Gallery of Art. But it has come a long way from its origins in Italy. Its fascinating story involves several English kings, the Empress of Russia, Joseph Stalin and America's last robber baron.

Winter Park writer and lecturer Lynn Schiffhorst will tell the story of this much-traveled St. George, looking at its narrow escapes from fire, freezing weather, and the destructive axes of angry mobs, as well as its final journey across the Atlantic as an undocumented immigrant. It's the story of a small but priceless work of art that became a pawn in the hands of some of history's most ruthless leaders.

Program Leader: Jerry Schiffhorst

The President's Corner



Hopefully, you will have a Thanksgiving filled with much thankfulness. May your Holidays be filled with a smile on your face and joy that warms your heart. My Best Wishes to each of you for a New Year filled with Peace, Love and Joy.

Donna Miller, Socky O'Sullivan and I attended the ESU Annual General Meeting in Washington, D. C. November 1-3. The National Board met on Friday, and some of us were able to take advantage of a tour to either the Folger Library or the U. S. Capitol, which was followed by a Welcome reception and dinner. It was pleasurable to see and converse with many other branch members from around the U. S. as well as the ESU National Staff. On Saturday we were privileged to attend sessions at the National Churchill Library at George Washington University during which Odgis and Company shared a Branding update with recommendations and participant interaction. The sessions were followed by a panel discussion of three erudite people sharing their thoughts of the importance of the usage and necessity of the English Language. The Branding Session was one of my highlights of the conference. There were several Branding recommendations highlighted in a power point presentation which I personally think will be beneficial to sharing who and what the English-Speaking Union is and what our mission and vision represent. These recommendations will be crucial in sharing with our local community as we move forward in celebration of the 100 years of ESU history and its future. I shared the power point with the Board and have had very positive feedback from board members. Sunday highlighted the Annual Meeting with reports by the ESU National President Quinn Peeper, the Finance Committee Chair John Raffaeli and the Executive Director Karen Karpowich. It was announced that Karen Karpowich, who has been serving as Interim Executive Director over the past year, has formally agreed to become the Executive Director; I feel very positive about this decision. Also, at the Annual General meeting there was a presentation of the slate of candidates for Directors-at-Large to the ESU National Board. Donna Miller has been selected to serve another term as a National Board member, and I have been selected to also serve as a National Board Member. The Strategic Planning Committee (a temporary committee formed following last year's AGM) presented its recommendations to the Board at the Friday Board Meeting; at the AGM it was shared that these recommendations will be considered by the Executive Committee. Following the AGM, the attendees attended a luncheon featuring remarks by Jane Easton, Director-General of the ESU of the Commonwealth and a presentation by Allen Packwood, Director of the Churchill Archives Centre who discussed "Churchill: Hollywood Versus Reality." Allen's most recent book is How Churchill Waged War – The Most Challenging Decisions of the Second World War. After lunch, Branch-led Breakout Sessions were held featuring "Shakespeare," "Communication," "Membership," "Regional/Outreach," and "Fundraising." I served as Facilitator with Mary Alice Phelan from Jacksonville for the Communications Session, and each of our Central Florida Branch representatives covered all the breakout sessions. I am very proud of what we in Central Florida do and will continue to do to honor the ESU mission and vision.

I look forward to seeing you at our December 2, 2019, meeting featuring Lynn Schiffhorst and her presentation titled "When Ruthless Power Collides with Art: The Amazing Story Behind One of the World's Greatest Painting."

"I have been impressed with the urgency of doing. Knowing is not enough; we must do." Leonardo da Vinci

Barbara Hughes, President



PROGRAM ACCOLADES

November 11 Program

The ESU Veterans Day Program offered nostalgia, history, poetry analysis, and...sentence diagramming. It was a feat to fit these varied elements into 60 minutes of excellence; yet, this feat was flawlessly accomplished by Matthew Forsythe, Assistant Professor at Rollins College and recipient of the Walter E. Barden Distinguished Teacher Award.

Forsythe opened and closed his lecture with a cherished photograph, a memento which displayed his own daughter surrounded by her Veteran grandfathers. After reeling in the audience with the sheer sentimentality of the scene, Forsythe went about carefully connecting the dots between a time when poetry and war writing idealized battles to the period of time when it served the purpose of enlightening readers and expanding our “collective memories.” He offered that especially in matters of conflict, “the challenge of the artist is to close the gap” between the unblemished civilian and the demolished soldier who knows too much. He presented the truth that in war our soldiers live through the realities of a “private life that belongs to the public.”



The in-depth discourse that followed Forsythe’s introduction resurrected and dissected the poetry of Wilfred Owen, who was killed in World War I at the young age of 25, just one week shy of the Armistice. After presenting our ESU members with a fully accessible - yet highly academic- analysis of Owen’s “Dulce et Decorum Est”, Forsythe brought his lecture to a close with an essay of his own:

“In Praise of Quiet Soldiers.” The essay was written to honor his father, Lawrence Forsythe, who retired last year from the United States Air Force. Through anecdotes and loving remembrance of his father’s service, Forsythe brought attention to the many men in the military who tirelessly give themselves “to their country.” It was a poignant and timely message that was absorbed by every ear in attendance.



In closing, the ESU would like to thank Matthew Forsythe for sharing so openly, reaching so deep, preparing so thoroughly, and reflecting the truths we all need to see.

Left to Right: Maurice O’Sullivan, Barbara Hughes, Matthew Forsythe, and Lawrence Forsythe

SCHOLARSHIP CHAIR'S MESSAGE



Wednesday, January 22nd, beginning with a reception at 4:00 p.m., is a special meeting for anyone interested in our Drey Scholarship Program. This year our Central Florida Branch sponsored six scholars for the TLAB (Teachers Learning Abroad) program: two attended Oxford University, two travelled to Scotland to the University of Edinburgh, and two participated in London's Globe Theater's "Teaching Shakespeare through Performance." Each of these scholars received \$7,000, which paid for their tuition, room, board, and travel expenses.

The 2019 Drey Scholars are as follows:

J.Marie Bailey heads up Winter Park High School's Theater Department, teaching IB theater classes and Access Drama for special needs students.

Jeffrey Cook is the Theater Director at Ocoee High School and is also Chair of District 5 Thespians. Both J.Marie and Jeff travelled to University of Edinburgh to attend a course on Theater and Performance, which included class visits to the International Fringe Festival.

Jennifer Bennett has always taught a unit called "Shakespearience" to students at Markham Woods Middle School in Seminole County. She and Tara Whitman, who is the head of West Orange High's Theater Department, went to London and actually performed on the stage at the Globe Theater as part of their experience with "Teaching Shakespeare through Performance."

Curt Dedge, who is the chair of Lake Nona's Social Studies Department and who teaches 5 different AP classes and sponsors the Muslim Student Association, chose Oxford University's intensive program in English literature.

Then, Lake Howell's Social Studies Department chair, **Rick Rodriguez**, decided the course called History, Politics, and Society- also at Oxford University- would meet his needs since he teaches 195 students AP Human Geography.

These amazing, dedicated Central Florida educators are eager to share their experiences and adventures from this summer's TLAB programs. All are invited to show your support of our scholars and Jesse Drey's legacy.

Reta Jackson,
Scholarship Chair

Theatrical Suiss Experience and the Edinburgh Fringe

- J.Marie Bailey

The power of storytelling is at the root of what I do as a theatre teacher. I strive to bring the essence of the story to the future actor, director, playwright and technician. So they, in turn, can give moments of theatre to an audience, a community, a school, keeping art, creative thought and beauty in the world. In order for me to accomplish this, I must be connected to this essence.

My adventure to Scotland with the SUISS session Theatre and Performance in English, Scottish and Irish Theatre was a connection to this essence, a complete emersion of art, creative thought and beauty. I know it sounds grandiose, but I think of this opportunity like a football coach who hasn't been trained in the newest plays or techniques and then is able to meet with and learn from the great Pete Carol or Mike Ditka or even Bobby Bowden. The best term I would give this adventure is career stabilizing. There are too many observations and transformative experiences from this training for me to relate; but I will highlight a few.

The three most formative experiences of this opportunity are the Fringe, the Highlands and the classes. The Edinburgh Fringe Festival, including other smaller festivals in the city, produce an opportunity to see over 3,000 "shows" over a four week period. There is everything from performance art to high production musicals, and I mean everything. In this atmosphere there is a hum, a creative energy, like nothing I have ever felt before. I witnessed art for art, theatre for change, dance for expression, music for release, comedy for catharsis. You name it; it was there. When not in class, I was taking in show, after show, after show.

Scotland herself is a land of poetry, whiskey and heritage. The lochs, crags and steep dramatic coastlines inspire the story, inspire the soul to reach and find something beyond oneself. On the off days, I visited the Highlands, and there I witnessed the splendor of nature that gives birth to the poetry that lives in every Scot. In the crags I felt the beating heart of the Island, the stubborn heart that screams "you can't tame me." One of my most transformative moments was when I stood within the ruins of Dunnottar Castle, up by Stonehaven, on a rare sunny day with the mist rolling in from the ocean and covering the coastline like a mother blankets a child. I stood and shivered, not because of the chill the mist brought with her, but because of the sudden historical connection to the Pictish people that I felt; and I was immediately humbled and understood my limited opportunity of existence in this world.

Then, SUISS sessions involved class discussions, script analysis, workshops, and live productions. Before heading to Scotland, I was assigned to read about ten new play scripts/works of theatre. Many were moving, some revolting, some I don't ever need to read again, but in the classes, which were filled with students from all over the world, I was able to see these texts from many viewpoints, which in turn expanded my thought process. While I very much loved the workshops and the productions, it was the classes that really impacted me as a teacher and taught me what I needed to bring to my students. There is a new form of theatre which I was unaware of called Post Dramatic Theatre, and I was able to experience and dissect this new age of theatre. To be at this transformative moment in theatre history is really amazing. My students will receive firsthand knowledge and texts that other schools and theatre programs will not offer or even understand.

The essence of storytelling, the art of the drama, is what I teach. It has been very difficult in my current moment of life to teach with the passion I saw from the youthful cohorts I had in class. My creative barrel was dry, splintered and slowly rotting with years of neglect from a lack of administrative or government support of teachers, or because I was stuck in a classroom with cinderblock and paint, or experiencing "teacher development" that is a waste of time; the passion and essence of the barrel slowly seeps out. Year by year, it warps until no amount of refilling can keep the barrel full and less and less joy and beauty can be transferred to the students. In a short two weeks, this program created a new barrel from old wood vessel that can properly transfer the knowledge and skill of the story with passion and essence. And when the barrel is refilled, it stays full and can withstand the years to come.

Drawing for an All-Expenses-Paid Trip to England

From Page to Stage: Text to Theater, Stratford-Upon-Avon, July 2020

Immerse yourself in the language and world of Shakespeare. Through theatrical performances at the world-renowned Royal Shakespeare Company, lectures with eminent scholars, exclusive behind-the-scenes tours, and museum visits, you will explore Shakespeare's family homes, enjoy the sites and shops that make Stratford-upon-Avon a unique destination, and gain a new perspective on how the Bard's legacy continues to shape our lives today. The 2019 Royal Shakespeare Company performances included *The Taming of the Shrew*, *As You Like It*, *Measure for Measure*, *The Provoked Wife*, and a performance at Shakespeare's Globe. The 2020 itinerary has not yet been posted.



This travel-learning experience is perfect for anyone interested in cultural exploration, life-long learning, or just having a unique English experience. It's also an excellent opportunity for English, social studies, and theater teachers of all experience levels (including pre-service and retired), and others who are eager to engage in study with world-class scholars and educators in a historic setting.

Any Central Florida E-SU member interested in entering a drawing for this trip...

1. Must be a paid-up member of the Branch since 2017. Not eligible: current Branch officers, Teacher T-Lab Scholars from 2017-2019. If selected, you will not be eligible for a 2020 T-Lab Scholarship.
2. Must hold a valid passport and be free to travel to England in July, 2020.
3. Must be able to participate fully in a weeklong travel-learning experience with a moderate level of physical activity, i.e., international air travel, bus transfers, walking tours, museum visits and theater experiences.
4. Must send an application before midnight, January 8, 2020. The application will be posted in the November and December Branch Newsletters and available at the November 11 and December 2 meetings.
5. Must be present to win a drawing on January 22, 2020 during the 4 pm Branch meeting at the University Club, Winter Park. If your name is drawn, but you are not present, we will draw another name. A winner and an alternate will be selected.
6. If selected, must meet with a Branch officer to complete course registration details, including signing an ESU waiver of liability.

The application is included as an insert in this Newsletter.

DREY ENDOWMENT NEWS

A Partnership in the Making

Announcing a new partnership between Central Florida ESU and Orlando Shakes, formerly known as Orlando Shakespeare Theater, The Education Departments of Orlando Shakes and the Central Florida Branch of ESU are a natural fit for a partnership. Both organizations have at their core the same mission: to enhance the cultural knowledge and literacy skills of young people in our community. While the two of us have been mutually supportive and admiring for years, we recently started a conversation to explore a more formal agreement between us. Thanks to Anne Hering, OST Director of Education for her time and willingness to explore new ideas, Douglas Love-Ramos, OST Managing Director for his enthusiasm and support, Donna Miller for her advice and long view of the history between the organizations, and our President Barbara Hughes whose forward-thinking started the whole conversation, we have just inked such an agreement. Most of the activities agreed to will take place after OST's fiscal year begins on June 1, 2020.

The purposes of the agreement include:

- Providing scholarships to Shakespeare production camps
- Encouraging a designated Title 1 school to establish a Shakespeare Competition
- Inspiring a passion for the work of William Shakespeare

Some highlights include:

Increasing the ESU commitment to summer camps for youth at the OS

Establishing ESU support for the OS to provide in-school Shakespeare Workshops

Initiating a formal commitment from OS to assist with the ESU Shakespeare Competition, including holding the competition at The OS, beginning Feb. 24, 2020

Reduced Season Ticket prices for ESU members (beginning 2020-21 season; more information later)

More details to come as we approach the implementation of each activity.

Jan McClure,

Drey Vice President



REMINDER

Please contact Gilda Gomez, VP Membership, with any address, phone number, or email changes so that we may update your contact information. Please email any changes to esucfbmembership@gmail.com.



SHAKESPEARE COMPETITION UPDATE

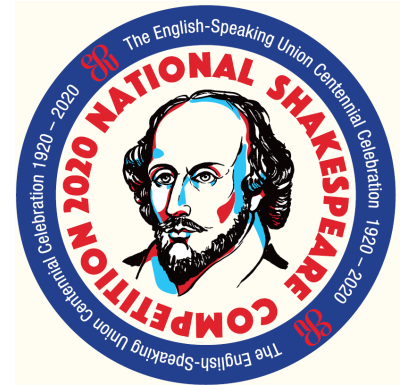
We are pleased to announce a change in venue for the 2020 ESU Shakespeare Competition to be held on Monday, February 24. The event still begins promptly at 4:00 p.m., with a check-in for competitors by 3:30 p.m. However, we will not be meeting at The University Club.

Please join us instead at:

Orlando Shakes

Address: 812 E Rollins Street, Orlando, FL 32803

Phone: (407) 447-1700



Our competitors will be able to take the stage in the Goldman Theater. Then, as the judges deliberate, please join us in the Patrons' Room for refreshments. This year we have 20 schools representing Orange, Osceola, and Seminole counties, with several schools making their debut in the competition this year.

Please join us for what promises to be a wonderful presentation of Shakespeare's beloved monologues and sonnets, and discover who will represent our branch at the National Shakespeare Competition in April.

In addition to our traditional \$1,000.00 First Place prize, and an all-expenses paid trip to perform at the Lincoln Center, Orlando Shakes has generously added to the bounty. Our First Place winner will also be the recipient of a scholarship to join The Young Company during the summer of 2020 (valued at an additional \$250.00). Mark your calendars now, noting the change of venue, so that you won't miss out on this wonderful exhibition of talent!

BRANCH BUSINESS



If you would prefer to receive your ESU newsletter via mail carrier, please notify Rebecca Van Horn at esu.rebeccavanhorn@yahoo.com, OR send a letter to ESU Rebecca Van Horn P.O. Box 758, Winter Park, Florida 32790-0758, OR sign your name on a list that will be at the check-in tables at the September meeting. **If you do not indicate that you want your newsletters sent by U.S. mail, you will receive it by email only.**

Central Florida Branch ESU Programs for 2019-2020

All meetings are held at the University Club unless noted

- **Monday, December 2, 2019** – “When Ruthless Power Collides with Art: The Amazing Story Behind One of the World’s Greatest Paintings” – Lynn Schiffhorst 3:30- 5 p.m.
- **Wednesday, January 22, 2020** – Scholars’ Reports 4- 5:30 p.m.
- **Monday, January 27, 2020** – Dinner- Winter Park Racquet Club – Orlando Big Band 6-9 p.m.
- **Sunday, February 2, 2020**– Scholars’ Reception 2-4 p.m.
- **Monday, February 24, 2020** - Shakespeare Competition 4-5; 5 Reception 5:30 Awards
- **Monday, March 9, 2020** – “England and the American Civil War”
History Professor Wayne Bowen, UCF 3:30-5 p.m.
- **Monday, April 6, 2020** – “John Singer Sargent in England” – Jan Clanton
3:30- 5 p.m.
- **Monday, May 11, 2020** – “Shakespeare Scandals and Scoundrels” - Andrea Mays
and Annual Meeting 3:30-5:30 p.m.





The English-Speaking Union

Central Florida Branch
Post Office Box 758
Winter Park, FL 32790-0758

**THE ENGLISH-SPEAKING UNION
CENTRAL FLORIDA BRANCH
Membership Application**

- ☐ I wish to become a member of the English-Speaking Union, Central Florida Branch.
- ☐ I wish to renew my membership of the English-Speaking Union, Central Florida Branch.

Please send a check for \$45 (single membership) or \$60 (couple membership) to the **English-Speaking Union, PO Box 758, Winter Park, FL 32790-0758**.

Name and Spouse's Name _____

Address _____ City _____ State ____ Zip _____

Phone, Fax, and Email _____

Visit the E-SU Central Florida website at www.E-SUus.org/centralflorida for more information.



Central Florida English-Speaking Union

Entry form for January 22, 2020 Drawing

All-Expenses Paid Trip to England, July 2020

***Stratford-Upon-Avon
From Page to Stage: Text to Theater***

Submission of this application will enter the member in a blind drawing, January 22, 2020, 4pm at an ESU meeting at the University Club, Winter Park.

MUST BE PRESENT TO WIN

Member's name _____

Member since _____

E-mail that is checked every day _____

Phone _____

Email to janmcclure407@gmail.com by midnight, Jan. 8, 2020.

OR

Mail to Jan McClure, 2260 Deloraine Trail, Maitland, FL 32751 and **received by Jan. 8.**