



# The English-Speaking Union

## Annual Report | 2019





# The English-Speaking Union

**ANNUAL REPORT** | July 1, 2018 – June 30, 2019

## CONTENTS

---

<b>The ESU Mission</b>	2
<b>The ESU Today</b>	2
<b>Branch Activities</b>	3
<b>ESU Branches</b>	4
<b>Annual Conference</b>	5
<b>English in Action (EiA)</b>	6
<b>Andrew Romay New Immigrant Center (ARNIC)</b>	7
<b>National Shakespeare Competition</b>	8 - 9
<b>Middle School Debate</b>	10
<b>Teachers Learning Abroad (TLab)</b>	11
<b>Travel and Learn Abroad (TLab for Lifelong Learners)</b>	12
<b>Luard Morse Scholarships</b>	13
<b>Secondary School Exchange</b>	13
<b>ARNIC Class of 2019 Graduation</b>	14 - 15
<b>Supporters</b>	16 - 19
<b>Financial Report</b>	20
<b>Board and Staff</b>	21

On the cover 2019 ESU National Shakespeare Competition Winners from left:  
First Place Maria Guardino Schreiner, Cleveland, Second Place Max Yillah, Philadelphia,  
and Third Place Kelly Bouslaiby, Los Angeles.

The English-Speaking Union of the United States  
144 East 39th St. | New York | NY 10016 | [www.esuus.org](http://www.esuus.org) | [info@esuus.org](mailto:info@esuus.org)



## The English-Speaking Union

The English-Speaking Union of the United States completed an exciting year in 2018-2019, one that marked a turning point for the ESU as it reaffirmed itself as a national organization that draws strength and purpose from its membership. An invigorated national Board of Directors and new executive leadership have led a major restructuring of our operations. This has encouraged a refocusing of our programs to support the Branches and position the ESU, on the eve of its Centennial in 2020, as a dynamic and growing national membership and educational organization.

This annual report reflects the ESU's renewed emphasis on Branch engagement and membership growth. Unquestionably one of last year's highlights was the spectacular "Rach and Bach" Gala concert on Saturday evening, November 17, at the Orpheum Theater presented by the ESU New Orleans Branch, which served as a benefit for the Branch. It was part of the 2018 Annual Conference on November 17-19, 2018 in New Orleans, LA, during which the ESU National Board reaffirmed its appreciation of our roots and history, making Branch support and membership growth a priority.

Throughout the year, a series of special committees with strong Branch participation worked to ensure strong governance and exciting programming to prepare the ESU for our second century. And a Centennial Branch Working Group has been drawing up plans for engaging all members in celebrating the ESU's 100th birthday.

This year, we also built on the ESU's traditions to strengthen our educational programs, activities that change lives through the power of the English language. We have further developed programs such as the ESU National Shakespeare Competition, Teachers Learning Abroad (TLab) Scholarships, Luard Morse Scholarships, ESU Middle School Debate, Secondary School Exchange, English in Action Conversations and the Andrew Romay New Immigrant Center. All of these programs have made our mission both timeless and timely.

I urge you to continue your membership, and if you are not a member yet, to join the English-Speaking Union. Come to our events, at your local Branch or at national headquarters, volunteer to tutor English language learners, donate to our programs, and be part of a vibrant and exciting community that has its eyes firmly set on its second century.



**Dr. Paul Beresford-Hill CBE, KSt.J**  
Chairman, The English-Speaking Union of the United States



More than  
**44,000**  
served in 2018-2019

**35,000**  
secondary school  
students

**2,100**  
teachers

**950**  
English learners

**2,000**  
volunteers

**4,000**  
members



## ESU Mission

The English-Speaking Union employs English as a catalyst to foster global understanding and good will by providing educational and cultural programs for students, educators, immigrants, lifelong learners and members.

## ESU Today

We work to inspire common bonds – person to person, one conversation, one presentation and one exchange at a time. By promoting civil discourse we empower participants to rise to their potential as individuals, thrive as global citizens and join in pursuing prosperity and peace.

The ESU's educational activities focus on immigrant employment readiness and integration, teacher enrichment and support, youth speaking programs and scholarships. Our programs meet critical needs brought about by increased migration and integration challenges and drastic cuts in education funding, teacher demoralization and burnout.

Founded in 1920 and headquartered in New York City, the ESU is a national nonprofit educational charity and membership organization with 65 branches across the country. The ESU is supported by corporate and foundation grants, the generosity of its members and individual donors and funds from its unrestricted endowment.





# Branch Activities



**55**  
Branch Scholarships

**18**  
Branches Offering Scholarships

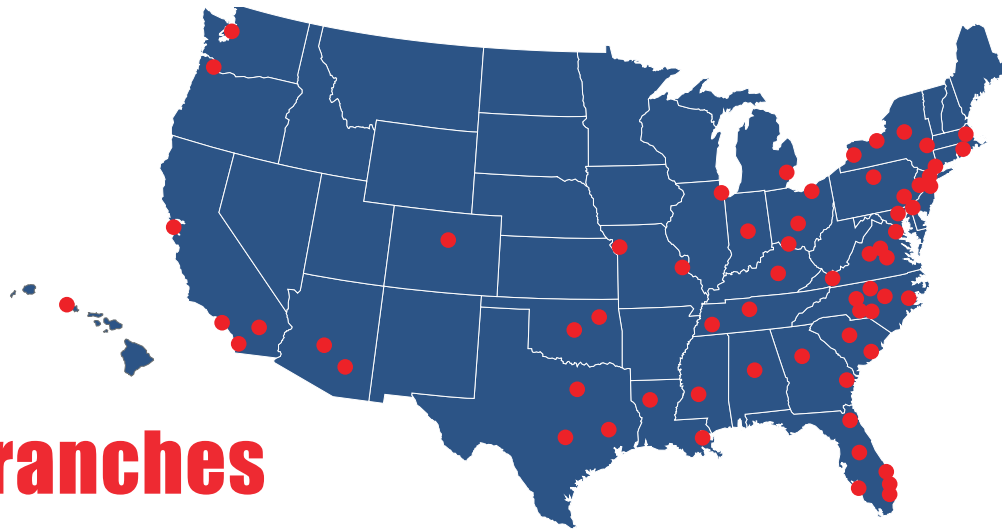


**54**  
Branches participated in the  
National Shakespeare Competition

**24,000**  
Students impacted







## ESU Branches

Headquartered in New York City and incorporated in the State of Delaware, The English-Speaking Union of the United States is an independent national membership organization with more than 4,000 members organized in 65 Branches across the country. Committed ESU members and volunteers are the pillars of our educational and cultural programs as they enthusiastically work in their local communities to carry the ESU mission forward.

The ESU Branches operate as limited liability companies (LLCs) formed in the State of Delaware with The English-Speaking Union of the United States as the sole member. This legal structure ensures the non-profit 501(c)(3) standing of all Branches and allows for branch management by a local Board of Directors or direct management by the National Board of Directors to deliver the ESU charitable programs.

The English-Speaking Union of the United States shares fellowship with more than 50 independent ESUs around the world, including the English-Speaking Union of the Commonwealth in London.

### **ALABAMA**

Birmingham

### **ARIZONA**

Phoenix  
Tucson

### **CALIFORNIA**

Desert (Palm Springs)  
Los Angeles  
San Diego  
San Francisco

### **COLORADO**

Denver

### **CONNECTICUT**

Greenwich

### **DELAWARE**

Delaware

### **DISTRICT OF COLUMBIA**

Washington DC

### **FLORIDA**

Central Florida  
Fort Lauderdale  
Jacksonville  
Miami-Dade-Monroe  
Naples  
Palm Beach

### **GEORGIA**

Atlanta  
Savannah

### **HAWAII**

Hawaii

### **ILLINOIS**

Chicago

### **INDIANA**

Indianapolis

### **KENTUCKY**

Kentucky

### **LOUISIANA**

New Orleans  
Shreveport

### **MARYLAND**

Maryland

### **MASSACHUSETTS**

Boston

### **MICHIGAN**

Detroit

### **MISSISSIPPI**

Jackson

### **MISSOURI**

Kansas City  
St. Louis

### **NEW JERSEY**

Monmouth County  
Princeton

### **NEW YORK**

Albany  
New York City  
Buffalo  
Rochester  
Syracuse

### **NORTH CAROLINA**

Charlotte  
Colonial (New Bern)  
Greensboro  
Research Triangle  
Salisbury  
Sandhills

### **OHIO**

Cincinnati  
Cleveland  
Columbus

### **OKLAHOMA**

Oklahoma City  
Tulsa

### **OREGON**

Portland

### **PENNSYLVANIA**

Central Pennsylvania  
Philadelphia

### **RHODE ISLAND**

Rhode Island

### **SOUTH CAROLINA**

Charleston  
Columbia

### **TENNESSEE**

Memphis  
Nashville

### **TEXAS**

Austin  
Dallas  
Houston

### **VIRGINIA**

Charlottesville  
Lexington  
Richmond  
Southwest Virginia

### **WASHINGTON**

Seattle



# ESU Annual Conference

New Orleans, Louisiana

November 17-19, 2018

The 2018 English-Speaking Union Annual Conference, hosted by the ESU New Orleans Branch, drew members from all over the country to the Wyndham Garden Baronne Plaza Hotel for an enjoyable and productive meeting. The conference focused on plans for the upcoming centennial of the organization in 2020 and continued to refine the strategies to take the ESU into its second century of excellence promoting the English language as a catalyst for global understanding and good will.

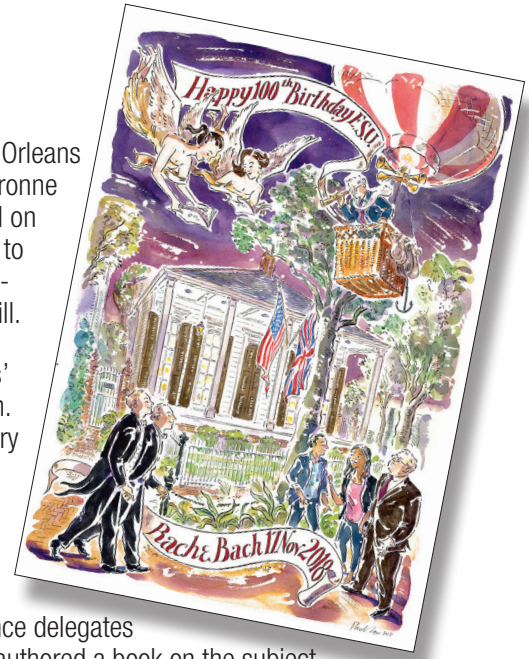
Among the issues discussed during the National Board and Branch Officers' conclave was a new emphasis on Branch engagement and membership growth. The ESU National Board reaffirmed its appreciation of the ESU's roots and history and the important role Branches play in the English-Speaking Union. It made Branch support and membership growth a priority.

The guest speaker was Peter Gilliver, a lexicographer and Associate Editor of the Oxford English Dictionary (OED). On Sunday morning, November 17, during the brunch preceding the Annual General Meeting, Gilliver regaled the conference delegates with fascinating stories about OED's creation in the pre-computer age. Having authored a book on the subject, Mr. Gilliver is one of the lecturers on the ESU Travel and Learn Abroad program for ESU members and lifelong learners that takes place each summer at the University of Oxford.

Also during the Annual General Meeting, the membership unanimously voted to elect to the Board of Directors, as recommended by the Nominating Committee, Janet Vanderpool Haedicke, Monroe, LA. The membership also voted to re-elect to a second or third term Cheryl Albuquerque, Palo Alto, CA; Jacques Brunswick, New York, NY; Duncan Karcher, New York, NY; Bettie Miller, Chapman, AL; Julia Van de Water, Lexington, VA; James W. Kerr Jr., Dallas, TX; Donald Best, Los Angeles, CA; Karen Blair-Brand, State College, PA; William B. Maschmeier, Seattle, WA; and Jeffrey L. Schnabel, Kansas City, MO.

The conference weekend offered a series of wonderful social events that brought our members closer together and reinforced the ESU's goal to foster relationships and inspire common bonds – person to person. Unquestionably the highlight of the weekend was the spectacular Gala “Rach and Bach” concert on Saturday evening, November 17, at the Orpheum Theater, which served as a benefit for the ESU New Orleans Branch. The Louisiana Philharmonic Orchestra, under the baton of conductor Ryan McAdams, provided the backdrop for the Gala. It starred world-renowned opera soloist sopranos Irini Kyriakidou Hymel and Christina Vial Comer, and guest pianists Michael D. Harold and ESU Board President E. Quinn Peeper, MD, who performed Bach Piano Concerto No. 5 and Rachmaninoff Piano Concerto No. 2 (hence “Rach and Bach”).

The conference weekend concluded with a day-long coach excursion up the Mississippi River. The Monday tour included visits to two historic antebellum plantations—San Francisco and Oak Alley—offering participants a look into a past when cotton was “King” and New Orleans was the largest city in the American South, a view at the current landscape along the river, as well as different approaches to historic and heritage preservation.







# English in Action (EiA)



English in Action (EiA) helps newcomers to the United States to master conversational English and learn about life in the US. In addition to giving students the gift of fluency in English, the program fosters cross-cultural exchange by pairing English language learners with volunteer tutors—native English speakers—for one-to-one conversation sessions. A hallmark of the program is its comprehensive tutor training using best practices in cross-cultural learning and leadership development. The tutor training emphasizes work with culturally diverse populations.

Our EiA volunteer tutors find the experience intellectually enriching and personally rewarding. Their loyalty to the program is due in great part to the extensive support and recognition they receive throughout their work as volunteers in English in Action. This past year we offered more than 80 hours of orientation and professional development coaching. We also provided inspiring teaching aids, including word games, exercises and quizzes which were themed to the season, current events and upcoming holidays. We keep in touch with our volunteers through the monthly *Tutor News* that features updates on new initiatives and events and recognizes a tutor in its *Tutor Spotlight*.

**92%**

of volunteers report  
that EiA makes them feel  
engaged and useful

**98%**

of volunteers report  
that EiA allowed them to learn  
more about other cultures

**684**

students served  
from more than

**65**

countries

**38,000**

student hours

**404**

volunteers

**120**

new volunteers

**145**

have volunteered more than

**5**

years

**97**

have volunteered more than

**10**

years

**44**

have volunteered more than

**25**

years



Watch EiA videos at  
[youtube.com/EnglishSpeakingUnion](https://youtube.com/EnglishSpeakingUnion)

Since  
2013

# Andrew Romay New Immigrant Center (ARNIC)

The Andrew Romay New Immigrant Center equips recent immigrants, refugees and asylum seekers in the New York metropolitan area with the skills, resources and support they need to integrate fully into American society and economic life. This free, year-long program offers English language classes, one-to-one conversation sessions with native speakers, workshops on various aspects of life in the U.S. and cultural activities to facilitate the success and integration of recent immigrants.

Our center provides a welcoming and inclusive environment where immigrants of all faiths and backgrounds can overcome barriers and achieve their potential. We offer a lending library and student lounge where members can practice English together while building community across cultures.

Some of the highlights of this year included the sixth annual Thanksgiving celebration, our third annual career day with mock interview and job search strategies. We launched We Speak NYC, an interactive ESL curriculum sponsored by the Mayor's Office of Immigrant Affairs. In addition, we hosted networking events to increase our students' knowledge of U.S. professional culture. Throughout the year we continued to expand our community partnerships and grow the ARNIC program.

Since ARNIC opened its doors, it has served more than 1,500 immigrants from over 90 countries. It is the only program of its kind in New York City.

## 2018 - 2019 ARNIC Success Stories:

A member from Iran  
used his improved English skills to start  
an online business selling organic wellness products.

~

A member from Italy  
used the skills she gained in the ARNIC writing class  
to win a prestigious journalism fellowship.

~

A member from Guatemala  
found the confidence to pursue his dream career  
and start an apprenticeship in the culinary arts.



**270**

immigrants from

**60**

countries.

**1,220**

language instruction hours

**45**

workshops

**94%**

of members report that ARNIC  
increased their confidence

**96%**

of members report that they  
improved their English skills

▶ Watch ARNIC videos at  
[www.stories-esuus.org](http://www.stories-esuus.org)



Since  
**1983**

# The English-Speaking Union **National Shakespeare Competition**



The English-Speaking Union National Shakespeare Competition is a performance-based educational program that engages with students and teachers across the country. High school students read, analyze and perform Shakespeare's monologues and sonnets in three qualifying stages – at the school, branch and national levels. The competition has been recognized by the Globe Center, the Children's Theatre Foundation of America and the American Academy of Achievement.

Through the competition, students acquire essential skills such as critical thinking, close reading and public speaking. They develop self-confidence and an appreciation for the beauty of Shakespeare's language and the power of words.

For 36 years, English-Speaking Union National Shakespeare Competition has been the only nation-wide Shakespeare competition exclusively for high school students. 2019 saw the introduction of the ESU National Shakespeare Competition: Online platform for the competition. Intended to extend the reach of ESU branches to areas previously beyond their reach, the

NSC: Online competition used technology to bring the competition to every state. Students from locations as diverse as Utah, Nevada and Northern Florida competed at their schools, then submitted a video in an online semi-finals round. The winners of this round were then invited to participate in the finals via a streaming platform where they competed live and in front of a panel of judges. The winner of the ESU National Shakespeare Competition: Online, Kip Conger of Ogden Utah, then joined the branch champions in New York City where he acquitted himself beautifully, placing 11th.

The finals of the 36th English-Speaking Union National Shakespeare Competition were held on Monday, April 29, 2018 at the Lincoln Center Theater in New York and drew 52 nation-wide winners.

Maria Guardino Schreiner won the first prize—a full scholarship to attend the Midsummer Conservatory at the British American Drama Academy in Oxford. A student of Julia A. Griffin at the Hawken Upper School, Maria ably represented the ESU Cleveland Branch. Maria performed



**“I am always amazed by the delight and focus these students bring to their investigation of the text. They often bring surprises in interpretation that are entertaining and enlightening.”**

**Dana Ivey** | Acclaimed actor and veteran judge of the ESU NSC



as Rosalind from Shakespeare's *As You Like It* and recited Sonnet 29 in the final round of the competition. Runner-up Max Yillah from the Academy at Palumbo proudly represented the Philadelphia Branch. He received a scholarship to attend the American Shakespeare Center Theater Camp in Staunton, Virginia. Kelly Bouslaiby from Henry J. Kaiser High School in Fontana, California and the Los Angeles Branch placed third in the competition and received a cash prize of \$500.

The ESU provides extensive support to the teachers who include the Competition in their curriculum. In addition to offering training materials such as lesson plans, monologue and sonnet selection packets and publicity materials, in 2019 a series of professional development workshops for middle and high school teachers were offered and led by certified practitioners from Shakespeare's Globe and Shakespeare's Birthplace Trust covering diverse topics such as "Shakespeare's Rhetoric of Power and Persuasion" and "Shakespeare the Family Man."

▶ Watch Shakespeare Competition videos at [youtube.com/EnglishSpeakingUnion](https://youtube.com/EnglishSpeakingUnion)

**360,000 +**  
high school students participated  
since its inception

**20,000**  
students

**2,000**  
teachers

**1,000**  
competitions

**54**  
branch communities

Since  
2011

# Middle School Debate



**2,300**  
students

**1,350**  
debate rounds

**41,000**  
minutes of debate

**500**  
volunteers

In partnership with Claremont McKenna University and launched with support from the National Endowment for the Humanities, the English-Speaking Union Middle School Debate program teaches adolescents the fundamentals of argumentation while developing their abstract reasoning, language arts and practical life skills. This enriching experience in civil discourse runs during the academic year and engages nearly 2,300 students in grades 5 to 8 in weekly debate activities and Saturday tournaments. Serving the New York, New Jersey and Washington, DC greater metropolitan areas, the ESU Middle School Debate program is unique in that it maximizes the learning and skill-building outcomes through extensive coach and judge training. It is an adaptation of the parliamentary model of debate for middle-school children that is specifically leveled for their development.

In 2018-2019, the program organized 22 day-long tournaments. Teacher debate-coach training is a critical aspect of the program and in 2018-19 more than 500 volunteers and judges were trained and engaged.

The MSPDP accelerates standards-based learning through debate instruction and empowers students to develop and practice excellence in critical thinking and public communication. It provides curricular information and other resources to integrate public speaking, reading comprehension, argumentation, critical listening, note taking, issue analysis, evidence evaluation, refutation methods, media literacy, and interdisciplinary thinking. Rigorous and relevant topic selection provides the opportunity for integration of debate training and skills in historical, economic, scientific, political, social, and current event studies. Former MS debaters have gone on to lead school community service projects and other clubs and programs, present to their local school boards and other organizations, and enter HS with a better understanding of national and local issues and potential solutions than their peers who did not debate.

▶ Watch Middle School Debate videos at  
[youtube.com/EnglishSpeakingUnion](https://youtube.com/EnglishSpeakingUnion)



Since  
1957

# Teachers Learning Abroad (TLab)

Now in its 61st year, the TLab summer study program offers educators extraordinary professional development opportunities in the most prestigious centers of higher learning in the UK. Scholarships enable teachers from across the US to experience authentic student life in the august universities of Oxford and Edinburgh while delving deep into a range of topics from English literature to history, politics and society; from creative writing to international politics. Shakespeare's Globe in London offers ESU TLab

scholars an exclusive course in how to teach middle and high school students to engage fully with Shakespeare's language and plays.

Hosted by our exclusive partners Shakespeare's Globe, University of Oxford and University of Edinburgh, teachers return to their classrooms refreshed and reinvigorated with new insights to share with their students.

▶ Watch TLab videos at [youtube.com/EnglishSpeakingUnion](https://youtube.com/EnglishSpeakingUnion)

*"It's one of those experiences that can't be duplicated, you have to be here to really understand how special it really is."*

Ruth-Terry Walden | Teacher, TLab alum | Stamford, CT



TLab

**2,700**  
participants  
since inception

**54**

teachers in  
2018-2019

Over  
**\$150,000**  
in scholarships



## Teachers Learning Abroad courses:



### UNIVERSITY OF EDINBURGH

- Text and Context: Modernism, Scottish Literature and Contemporary Literature
- Creative Writing
- Contemporary British and Irish Theater and Performance



### UNIVERSITY OF OXFORD

- English Literature
- History, Politics and Society
- Creative Writing
- International Politics



### SHAKESPEARE'S GLOBE

- Teaching Shakespeare through Performance

2020  
Programs at  
[www.esuus.org](http://www.esuus.org)



Launched  
in  
2017

# Travel and Learn Abroad (TLab for Lifelong Learners)

An offshoot of our venerable Teachers Learning Abroad (TLab) program, TLab for Lifelong Learners opens up the exclusive educational opportunities previously available only to educators. These one-week educational trips offer ESU members and others interested in the English language and culture the unforgettable adventure of living and learning on the centuries-old Oxford campus or experiencing Shakespeare by following his footsteps in his home town of Stratford-upon-Avon. Lectures by renowned scholars, behind-the-scenes tours, access to archives not open to

the public and the company of intellectually curious, worldly, and adventurous fellow travelers power the meaningful enrichment and insider perspectives offered by the ESU Travel and Learn Abroad program.

What is more, participants are doing good while having fun because the proceeds from TLab for Lifelong Learners help to fund scholarships for the ESU Teachers Learning Abroad program for educators.

*“I am already dreaming of returning to Stratford in the future for another full-immersion in the Bard.”*

Deirdre Donovan | Retired New York City Teacher | Two time visitor to Stratford-Upon-Avon with the ESU



Shakespeare  
birthplace trust

2020  
Programs at  
[www.esuus.org](http://www.esuus.org)

## Travel and Learn Abroad Courses for Lifelong Learners:

SHAKESPEARE BIRTHPLACE TRUST/STRATFORD-UPON-AVON

- From Page to Stage: Text and Theater



Since  
1969

## Luard Morse Scholarships

The English Speaking Union Luard Morse Scholarship is a merit scholarship program that provides up to \$25,000 toward a semester of study at an elite British university. The Luard Morse scholarship is available only to American students attending historically black colleges and universities in the United States. The scholarship is open to sophomore students in all disciplines and has been awarded to students majoring in economics, philosophy, finance, mathematics, liberal arts and the sciences.

Since the inaugural 1969-1970 academic year and 2018, 80 exceptional students were awarded this distinction through a rigorous and highly competitive selection process. 2019 saw a remarkable response to the program with a record number of applications from a diverse group of schools. In response to this groundswell of enthusiasm, three Luard Morse Scholarships were awarded to excellent candidates, instead of the usual one.

*“During the six months I was overseas  
I’ve learned so much about myself and my position in the world.”*

Kyana Washington | 2018 LM Scholar | Oxford University



Since  
1928

## Secondary School Exchange (SSE)

The ESU Secondary School Exchange program is a merit-based scholarship that provides tuition, room and board for students to spend a semester or year (gap year) abroad between high school and college. Since its inception in 1928, the SSE program has allowed thousands of students to expand their horizons academically and culturally by studying at schools in the UK. The oldest of all our educational programs, the SSE is at the heart of the ESU mission to use the English language to foster global understanding and good will through cultural and educational exchanges.

Through this experience, students gain maturity, independence and global perspectives that benefit them in college and in early professional life.





# **Andrew Romay New Immigrant Center** **Class of 2019 Graduation**



For the newest Andrew Romay New Immigrant Center (ARNIC) graduates, June 13 was an especially memorable occasion as they attended a graduation ceremony at the Harvard Club of New York. The ARNIC Class of 2019 was exceptionally diverse and included nearly 120 graduates from more than 40 countries.

The ceremony was a lively event that brought together the graduates, their families, program alumni, teachers, staff and members of the ESU board. Three ARNIC graduates spoke on behalf of the 2019 class: Roberto Rocael Baten Ramirez from Guatemala, Maddalena Maltese from Italy and Tuiana Mitakhniova from Russia.

Chef Fabian von Hauske Valtierra delivered the commencement address. Chef Fabian had previously been awarded the Vilcek Prize for Creative Promise in Culinary Arts by the Vilcek Foundation in recognition of his outstanding achievements as an immigrant chef. Speaking directly to the 2019 graduates, Chef Fabian noted the many ups and downs of his own immigration journey. He urged graduates to stay optimistic despite the many challenges they face and noted that New York City remains a city built by and for immigrants.

After the speeches, ESU Chairman of the Board, Dr. Paul Beresford-Hill, CBE, KSt.J, dressed in full academic regalia, presented each graduate with a certificate of completion. To close the evening, everyone gathered for a reception that reflected the welcoming and inclusive spirit of the ARNIC community.





# The English-Speaking Union Founder's Award Gala 2019



During a gala dinner following the graduation ceremony, the English-Speaking Union bestowed posthumously the ESU Founder's Award on Robert P. Morse, Founder, Executive Chairman, Principal and Senior Portfolio Manager of Morse Asset Management, for his commitment to the Anglophile community and the dialogue for peace and understanding and for his decades-long involvement in the ESU as a loyal and generous patron, member of the Board of Directors, and champion for the organization. The dinner celebrated Mr. Morse's legacy and raised funds for ARNIC and ESU's other education programs.

The English-Speaking Union Founder's Award was created in 1991 by an action of the ESU National Board to honor prominent individuals who exemplify the primary interests of the organization's founder, Sir Evelyn Wrench, namely to foster US-British relations, cultivate international understanding and good will and promote the mastery and extended use of the English language.



## Previous Award Recipients:

The Right Honorable  
**Margaret Thatcher**, OM, FRS, MP.

Former ESU Chairman  
**William R. Miller** CBE, KStJ

Artist **Edwina Sandys**,  
granddaughter of Sir Winston Churchill

**Dr. Paul Beresford-Hill**, CBE, KStJ

ESU benefactor  
**Andrew Romain** (posthumously)

Long-term ESU President and President Emerita,  
the late **Doe Thornburg**

# With Thanks to Our Donors

July 1, 2018 – June 30, 2019

\* Individuals who generously participated in the English-Speaking Union National Patron Program providing unrestricted operating support to the ESU and its Branches.

‡ Deceased

## LEADERSHIP CIRCLE

\$100,000 OR MORE

Marietta and Andrew Romay Foundation  
Foundation to Promote Open Society

## VISIONARIES' SOCIETY

\$25,000 - \$99,999

Hearst Foundations  
Mr.‡ and Mrs. Robert P. Morse

## WALTER HINES PAGE SOCIETY

\$10,000 - \$24,999

Mr. Donald A. Best\*  
Estate of Charlotte Pierce Armstrong  
Goldman Sachs Gives  
Mr. William R. Miller CBE, KSt.J \*  
Dr. E. Quinn Peeper & Mr. Michael D. Harold \*

## NATIONAL FELLOWS

\$5,000 - \$9,999

Mr. and Mrs. Sumner E. Anderson  
Axe-Houghton Foundation  
Dr. Paul Beresford-Hill CBE, KSt.J \*  
Bristol-Myers Squibb Foundation  
Dr. Lovejoy Conquest &  
Mr. Fred Kleinschmidt\*  
Lillian Goldman Charitable Trust  
Ms. Julia Hansen\*  
Henry E. Niles Foundation  
Dr. and Mrs. Jan Vilcek

## CHAIRMAN'S CIRCLE

\$2,500 - \$4,999

Dr. Cheryl Albuquerque \*  
Stewart Clifford/The Woolley Clifford Foundation \*  
Richard D. Donchian Foundation  
Flushing Bank  
Edward and Julia Hansen Foundation  
The Jesse & Dorothy Hartman Foundation  
The M&T Charitable Foundation  
Mr. David Martinelli \*  
Mr. William B. Maschmeier \*  
Mr. Darryl R. McCormick \*  
Mrs. Bettie Miller/Betty Rossell McGowin  
Charitable Trust \*  
Ms. Jan Nicholson  
PNC Foundation  
Mr. John J. Raffaeli \*  
Dr. and Mrs. George W. Ray III \*  
Mr. and Mrs. Charles D. Reaves \*  
James S. and Louise B. Rimbaugh  
Fund of the Community Foundation of Broward  
Mr. Jeffrey L. Schnabel \*  
Dr. Susan Robin Sinclair \*  
Dr. Julia Churchill Van de Water \*

## VICE CHAIRMAN'S CIRCLE

\$1,500 - \$2,499

Dr. Karen Blair-Brand \*  
Mrs. Christine M. Brown \*  
Dr. and Mrs. David A. Dooley \*  
ESU New Orleans Branch  
Mr. and Mrs. Lawrence and  
Cynthia Fields  
Dr. Janet V. Haedicke \*  
Mr. Duncan Karcher \*  
Ms. Diane Schneider  
Mr. and Mrs. Stanley DeForest Scott \*  
Mr. Mathew B. West \*

## PRESIDENT'S CIRCLE

\$1,000 - \$1,499

Mr. Richard A. Anderson  
Mr. H. Stuart Campbell ‡\*  
Mr. and Mrs. Thomas E. Doughty, Jr.  
Drue Heinz Trust  
Mr. Timothy L. Fields and  
Mr. Chris Bergeaux \*  
Mr. William C. Fuller, Jr.  
Ms. Candee E. Kane  
Ms. Marjorie L. Kennedy \*  
Judge James W. Kerr, Jr. \*  
Mr. and Mrs. Rodney Koenig \*  
Mrs. Alice La Prelle \*  
Mrs. Donna M. Miller \*  
Ms. Bettie M. Miller \*  
Ms. Patricia Ann Moore \*  
Ms. Dorinda J. Oliver \*  
Mrs. Mary Alice Phelan \*  
PKF O'Connor Davies LLP  
Mrs. Natalie T. Pray  
Dr. Brian Abel Ragen \*  
Ms. Sally Richards \*  
Ms. Martha Sharpless \*  
Dr. Susan Robin Sinclair \*  
Mr. Mark Swank  
Mrs. Alison Griscom Wilson  
Mr. John Winthrop/Lion and Hare Fund  
of the New York Community Trust  
Mr. and Mrs. Philip Woollam \*  
Y and H Soda Foundation

## NATIONAL SUSTAINER

\$750 - \$999

Mr. and Mrs. Henry Bell III \*  
Bradley E. Bodager, Esq. \*  
Mrs. Alice G. Childs  
Miss Barbara M. Deacon \*  
Mr. and Mrs. Guy B. Dixon  
Mr. Thomas H. Huss \*  
Mr. Jeffrey Tennant and Mr. Bruce Smith \*  
Mrs. Patricia A. Woods

## NATIONAL SPONSOR

\$500 - \$749

Mr. Matthew Barhydt and  
Mr. Javier Arana \*  
Mr. and Mrs. Elwood L. Baxter \*  
Mr. Leandro Borello and  
Ms. Christine Duvert  
Ms. Alice M. Boyne \*  
Dr. James B. Broadhurst \*  
Ms. Elizabeth Brothers \*  
Mr. Jacques Brunswick  
Mr. and Mrs. Daniel Bukovac \*  
Ms. Elizabeth Anne Buzzell \*  
Mrs. Anne Chafee Eichin  
Mr. and Mrs. Jean Paul Elard \*  
ESU Charleston Branch  
Ms. Elizabeth R. Etoll \*  
Dr. and Mrs. Albert C. Gordon \*  
Mr. Robert H. Gunn, Jr. \*  
Ms. Nicole A. Halbreiner \*  
Mr. O. Delton Harrison, Jr. \*  
Dr. and Mrs. Thomas Herrin \*  
Dr. and Mrs. Charles Hesdorffer \*  
Dr. Jerry Huff \*  
Rev. and Mrs. Ernest E. Hunt \*  
ICON Interiors, Inc.  
Mr. Karl D. Jackson  
Mr. and Mrs. Drew Jardine \*  
Mr. and Mrs. Joshua Kenyon \*  
Mr. Keith W. Lerch \*  
Mrs. Dorothy Letts \*  
Mr. John T. Magill \*  
Mr. and Mrs. Edward W. Martin \*  
Dr. Thomas A. Mason and  
Ms. Christine H. Guyonneau \*  
Mrs. David J. McDaniel \*  
Dr. Renee McEldowney \*  
Mr. and Mrs. Martin F. McNamara \*  
Dr. Langdon L. Miller  
Mr. and Mrs. Jacques Moore \*  
Mr. and Mrs. Bennet Muse \*  
Ms. Susan M. Nelsen \*  
Mrs. Leslie H. Newman  
Mr. Gary S. Oaks \*  
Mr. Clarke F. O'Reilly, Jr. \*  
Mr. and Mrs. Edward Parsons \*  
Mrs. Bonnie M. Resinski \*  
Mr. Robert W. Robinson  
Mr. and Mrs. Claude Schlesinger \*  
Mr. Noel Sloan \*  
Mr. and Mrs. Sherwood H. Smith, Jr.  
Szerlip & Company  
Ms. Susan E. Thurston Grathwohl/  
Thurston Charitable Foundation \*  
Mrs. Frederick W. Toohey \*  
Mr. and Mrs. W. Sloan Upton  
Mr. and Mrs. Dan Van Horn



Rev. Schuyler Vogel and  
 Ms. Kristen Michaelson  
 Mr. and Mrs. J. Otey Walker III \*  
 Mrs. Ruth Weaver \*  
 Mr. and Mrs. Andrew Webster \*  
 Mrs. Annette Weinstein \*  
 Mr. and Mrs. James Wesner \*  
 Mr. and Mrs. Samuel White-Trivas \*  
 Ms. Kimberly Yellin

## **NATIONAL DONOR** **\$300 - \$499**

Ms. Barbara Arras \*  
 Ms. Marian Bach  
 Mr. and Mrs. Christopher Baring \*  
 Ms. Mary Anne Barker  
 Mrs. Ruth A. Barker \*  
 Ms. Sylvia Barnard \*  
 Mr. Robert M. Becnel and  
 Ms. Diane K. Zink \*  
 Ms. Ying Benms \*  
 Mrs. Elizabeth Bergen and  
 Mr. Robert Laidlaw \*  
 Mrs. Rosemary D. Blanchard \*  
 Mr. Paul T. Boghosian \*  
 Mr. and Mrs. John G.B. Boyd \*  
 Ms. Sandra Boyd \*  
 Mrs. Barbara W. Brasher \*  
 Ms. Virginia Brody \*  
 Ms. Sarina Bronfin  
 Ms. Joy Daniels Brower \*  
 Mrs. E. Fulton Brylawski \*  
 Hon. Bruce S. Buckland and  
 Ms. Laura Enghauser \*  
 Mrs. Pamela Bushing \*  
 Mr. and Mrs. Carlo Capomazza di Campolattaro \*  
 Mr. and Mrs. David B. Carter \*  
 Mr. and Mrs. Leonard Caruso \*  
 Mr. and Mrs. William W. Caruth III \*  
 Mr. Matthew E. Cheek \*  
 Mrs. Jackson L. Clagett III \*  
 Mrs. Betty Clarke \*  
 Dr. James B. Congleton III \*  
 Mr. Brendan Contaut  
 Mr. and Mrs. Donald Cook \*  
 Ms. Christine Corcoran and  
 Mr. Edward Stark \*  
 Mr. and Mrs. Anthony H. Cowan \*  
 Dr. Rennie W. Culver \*  
 Ms. Leslie P. Daisy \*  
 Mrs. Jean H. Davison \*  
 Mr. and Mrs. Robert DeFer \*  
 Mr. and Mrs. Micheal Dendy \*  
 Ms. Alta Devivo \*  
 Ms. Gwen Dixie \*  
 Ms. Ruth V. Doreck \*  
 Mr. and Mrs. Prescott N. Dunbar \*  
 Mrs. Mary Suzanne Dunea \*  
 Mrs. Vicky Ellison \*  
 Mr. and Mrs. Tony Elms \*  
 Ms. Susan A. Estabrook \*  
 Dr. and Mrs. James P. Fadely \*  
 Mr. Peter D. Farnham and Ms. Barbara Walker \*  
 Mrs. Sallie Van Pelt Feild \*  
 Ms. Susan M. Ferris \*  
 Ms. Ginger Finley \*

Ms. Elizabeth Gemmill \*  
 Mr. Richard Gill and Ms. Pauline E. Dickey \*  
 Dr. and Mrs. John L. Gordon, Jr. \*  
 Dr. W.R. Griffith and Dr. Ann Barker Griffith \*  
 Mr. and Mrs. F. David Grissett \*  
 Mr. Michael D. Harold  
 Ms. Joy Harris \*  
 Mr. and Mrs. Wyatt R. Haskell \*  
 Mrs. Phyllis G. Heard \*  
 Ms. Elizabeth G. Heard \*  
 Mr. Theodore Heilman  
 Mr. Paul Henry \*  
 Mrs. Bobbie Cates Hicks \*  
 Ms. Debbie Hill  
 Mr. and Mrs. George Hillard III \*  
 Ms. Karlee Hilliard \*  
 Mr. and Mrs. Paul F. Hoch \*  
 Mr. and Mrs. Jack D. Horner \*  
 Mrs. Barbara W. Hughes \*  
 Mr. Marshall C. Hunt, Jr. \*  
 Mr. J. Mack Huston \*  
 Ms. Alice J. Irby \*  
 Dr. and Mrs. Dentcho Ivanov \*  
 Ms. Rossana D. Ivanova and Mr. Pierre Swart \*  
 Dr. and Mrs. A. Charles Jackson, Jr. \*  
 Mr. Allan D. Jergesen \*  
 Ms. Judy Jolly \*  
 Ms. Laura Frances Jordan \*  
 Ms. Marjorie T. Julian \*  
 Ms. Karen Karpowich and Mr. Ian Calderon  
 Mr. Andrew Katchen  
 Mr. H. James Keats, Jr. \*  
 Mrs. Donald M. Kendall, Sr. \*  
 Ms. Barbara B. Kiffmeyer ‡\*  
 Ms. Annette S. Kirby \*  
 Ms. Gloria C. Kline \*  
 Mr. and Mrs. Arthur Kniffen III \*  
 Dr. Maria Kontoyianni  
 Mrs. Gene S. Kosich \*  
 Mr. Paul Kuhn \*  
 Mrs. John Peter Labouisse \*  
 Mr. and Mrs. Randolph M. LaGasse \*  
 Mr. James T. Lang, Jr. \*  
 Mr. and Mrs. Eugene W. Lausch \*  
 Mr. and Mrs. Robert E. Leak \*  
 Mr. and Mrs. H. Pettus LeCompte \*  
 Ms. Hilary Leff  
 Dr. and Mrs. Gordon B. LeGrand \*  
 Mr. and Mrs. Edwin Deane Leonard \*  
 Dr. Elaine Leventhal/  
 The Howard & Elaine Leventhal Charitable Trust  
 Mr. Jonathan S. Linker  
 Dr. and Mrs. William M. Long \*  
 Ms. Carol Losos \*  
 Mrs. Babbie Lovett \*  
 Mr. and Mrs. Kevin G. Mackey \*  
 Ms. Nancy Macmillan ‡  
 Mr. and Mrs. Wayne Maddox \*  
 Mr. and Mrs. Charles H. Maddrey \*  
 Mrs. Ruth M. Mader \*  
 Dr. and Mrs. John Malloy \*  
 Ms. Sharon Margolis  
 Dr. Heather Bonnie McCabe \*  
 Ms. Gayla J. McCluskey and  
 Dr. David Humphrey \*  
 Mr. and Mrs. Leander McCormick-Goodhart \*

Mrs. Faye McKay-Clegg \*  
 Mr. Francis W. McMillan  
 Mr. and Mrs. John Mendenhall \*  
 Mrs. Anne H. Metrailler  
 Mrs. Joyce Louise Miano \*  
 Ms. Madelyn Mignatti \*  
 Ms. Carolyn Mitchell  
 Mr. Gregory Morey and Mr. Scott James \*  
 Mrs. Jean Morris \*  
 Mr. and Mrs. Clive Muncaster \*  
 Ms. Lesly Murray and Mr. Steve Edds \*  
 Mr. and Mrs. Rick C. Normand \*  
 Mrs. Gloria B. Norris \*  
 Ms. Mary Elizabeth O'Neill and  
 Mr. William Harkins \*  
 Ms. A. B. Orthwein \*  
 Mr. Matt Pantaleoni \*  
 Mr. and Mrs. George Lee Parson \*  
 Mr. and Mrs. Donald M. Pattillo \*  
 Mrs. Ingrid Philbrick \*  
 Mr. Lee Pollock \*  
 Dr. and Mrs. Peter I. Pressman  
 Mr. and Mrs. William N. Puckett \*  
 Mr. Jonathan D. Rabinowitz \*  
 Mrs. Julia S. Rankin \*  
 Mr. and Mrs. Ralph Roberson \*  
 Mrs. Jean L. Robertson \*  
 Mr. and Mrs. Charles Robinson \*  
 Mr. and Mrs. Greg Rohan \*  
 Ms. Mary B. Rollins \*  
 Mr. Jonathan Romero  
 Mr. and Mrs. Joseph Roxe/  
 Roxe Foundation \*  
 Mr. and Mrs. Henry Schulhoff \*  
 Mr. and Mrs. Frederic W. Schwartz, Jr. \*  
 Mr. and Mrs. Stephen G. Schweller \*  
 Mr. and Mrs. Terrance A. Secker \*  
 Mr. ‡ and Mrs. John O. Selvage \*  
 Dr. and Mrs. Robert Sevier \*  
 Mr. Glenn Shadrake  
 Mr. Taylor Sharpe \*  
 Ms. Nora H. Shepard \*  
 Mrs. Janet Shope \*  
 Mrs. Betty Simpson \*  
 Mr. and Mrs. James A. Smith \*  
 Mrs. Shirley P. Spears \*  
 Mr. and Mrs. Raymond J. Staffeldt \*  
 Mr. and Mrs. Harry C. Stahl \*  
 Mr. and Mrs. R. Curtis Steele \*  
 Drs. Austin and Jane Sumner \*  
 Ms. Dorothea Theodore \*  
 Ms. Eleanor Theodore \*  
 Mr. John Michael Thornton and  
 Ms. Donna Altieri \*  
 Ms. Mary Alice Toomey \*  
 Dr. Louise Valine \*  
 Mr. and Mrs. Jay C. Van Kirk II \*  
 Mrs. Lisa L. Vimmerstedt \*  
 Mr. and Mrs. Brian J. Viner \*  
 Mr. and Mrs. Robert Austin Vinyard \*  
 Cedric W. Vogel, Esq. \*  
 Ms. Deanna Wagoner  
 Dr. Suzy M. Wakefield and  
 Mr. Jay S. Wakefield \*  
 Ms. JoAnn Wallace \*  
 Ms. Katherine K. Walls \*

*continued . . .*

Mr. and Mrs. John L. Warden \*  
 Lowry R. Watkins, Jr. Esq. \*  
 Dr. Peter D. Weigl  
 Ms. Lynne Wheat \*  
 Mr. and Mrs. Charles M. Whedbee \*  
 Mrs. Lucille T. Whitley \*  
 Mrs. Samuel L. Willard II \*  
 Dr. and Mrs. Henry P. Williams III \*  
 Ms. Sarah L. Williams \*  
 Mrs. John D. Wilson ‡\*  
 Prof. Elaine Orr Wise \*  
 Mr. and Mrs. Richard C. Wolfe \*  
 Dr. and Mrs. Robert J. Wright \*  
 Mr. and Mrs. John N. Wrinkle \*  
 Dr. and Mrs. Ralph Wyndrum \*

## **SUPPORTER** **\$100 - \$299**

Mr. and Mrs. Herschel L. Abbott, Jr.  
 Dr. Mary E. Alexander  
 Mr. Robert Amott and  
 Ms. Janice Flanagan  
 Mr. and Mrs. James Anderson  
 Mr. James B. Armstrong  
 Mr. and Mrs. Douglas Balchan  
 Mr. David P. Bancroft  
 Prof. David F. Bartlett  
 Mr. George W. Beatty  
 Mr. and Mrs. David Bellew  
 Mr. and Mrs. David P. Bennett III  
 Ms. Janifer Bennett  
 Mr. and Mrs. Thomas H. Bliss  
 Mr. Stuart J. Bloomberg  
 Dr. Nancy R. Bogen and  
 Mr. Arnold Greissle  
 Mr. Guy A. Bramble  
 Mr. Peter W. Broer  
 Ms. Pauline Brooks  
 Mrs. Josephine T. Brown  
 Mr. Alan S. Brown  
 Mr. and Mrs. Bradley Brummeler  
 Dr. Gregory William Buck  
 Mr. and Mrs. Brian Burns  
 Mr. James L. Bittenwieser  
 Mrs. Lee Cain  
 Mr. David L. Calfee  
 Mrs. Carla A. Camp  
 Mr. and Mrs. Gary T. Capen  
 Mr. Ronald N. Carter  
 Mrs. Carol Cherry  
 Mr. Stephen F. Christy  
 Mr. Charles E. Clapp III  
 Ms. Phyllis Cohen  
 Mr. Roger S. Core  
 Mr. Christopher J. Cull  
 Ms. Jean Cumming  
 Ms. Ellen B. Cutler and  
 Mr. Daniel Tamkus  
 Ms. Gertrude de G. Wilmers  
 Mr. and Mrs. Peter N. Dennehy  
 Ms. Catherine Dinehart  
 Mr. James M. Donohue  
 Mr. David Drinkwater  
 Mr. Peter B. Elliott  
 Estate of Louise M. Balling  
 Mr. Scott E. Evenbeck

Mr. Joseph Feldman  
 Mr. and Mrs. Tom Ferguson  
 Mr. Ronald Lee Fleming  
 Ms. Sheila Fleming  
 Mr. Simon J. Frankel  
 Ms. Betty Franklin  
 Ms. Sofie D. Franzen-Moyle  
 Mr. and Mrs. John A.Y. Geater  
 Mrs. Maxfield S. Gibbons  
 Mr. W. Langley Granbery, Jr.  
 Dr. Deloris Grant  
 Mr. Dan M. Griffith IV  
 Mr. and Mrs. Dennis H. Grubbs  
 Dr. Warren G. Hall  
 Dr. Susan Ford Hammaker  
 Ms. Bonnie K. Harkness  
 Mr. Henry H. Harrell  
 Mr. Paul D. Harrington  
 Mr. David T. Harris and Mrs. Laura Harris  
 Mr. and Mrs. Richard B. Hatfield  
 Ms. Christine Howard  
 Ms. Diana James  
 Mr. Robert L. Johnston  
 Mr. and Mrs. Charles E. Johnston II  
 Mr. James E. Kelley  
 Mr. Timothy E. Kelley  
 Mr. Lou C. Kerr/The Kerr Foundation  
 Ms. Candida Korman  
 Ms. Daria Pace Lamb  
 Mr. Mark Lawhorn and Ms. Lynn Haff  
 Mr. and Mrs. Lawrence Lewis  
 Ms. Hilda Lewis  
 Mr. and Mrs. Lanneau D. Lide, Jr.  
 Mr. Richard B. Lightfoot  
 Mrs. Elizabeth M. Loomis  
 Mr. Henry S. Lynn, Jr.  
 Dr. Peter B. Lyon  
 Ms. Diana Mackie  
 Mr. and Mrs. James H. Maloney  
 Ms. Della McDougal  
 Mr. and Mrs. Bernard McElhone/  
 The McElhone Family Foundation  
 Dr. Christopher Medalis and  
 Mr. Boyan Konstantinov  
 Mr. Belkacem Mellal  
 Mrs. Ellen G. Miles  
 Ms. Concetta Miller  
 Dr. Toni J. Morris  
 Mr. and Mrs. John H. Morris, Jr.  
 Ms. Julie C. Morse  
 Mrs. Thaddeus Moseley  
 Mr. Nyi Nyi  
 Dr. and Mrs. John Oates  
 Ms. Margaret J. O'Brien and  
 Mr. Robert J. Langone  
 Mr. Daniel O'Day  
 Ms. Karen Oestreicher  
 Mr. William H. Painter  
 Mrs. Mary Perkins  
 Mr. Anthony C.E. Quainton  
 Mrs. Patricia Ratliff  
 Mr. Lawrence Raymond  
 Mr. Sanjay Reddy and  
 Mrs. Julia Harrington Reddy  
 Mr. Robert Redfield  
 Dr. Jill Toliver Richardson

Rev. John W. S. Rick III  
 Mr. James K. Robertson  
 Mr. Christopher W. Rogers  
 Mr. and Mrs. Daniel B. Rowland  
 Mr. Demetriouse L. Russell  
 Mr. Marshall Rutter and  
 Ms. Terry S. Knowles  
 Mr. William K. Sacco  
 Ms. Allison Scilla-Bilawsky  
 Mr. John Seed/  
 The Saint Paul Foundation  
 Mr. Robert B. Semple Jr.  
 Mr. Craig H. Shaver  
 Mr. Adam D. Shepard  
 Ms. Suzanne M. Shevlin  
 Mr. Bejan Shirvani  
 Dr. and Mrs. Jon Sigurdson  
 Mr. and Mrs. Steven J. Simons  
 Mr. Hugh W. Sloan, Jr.  
 Dr. and Mrs. Norman Smith  
 Mr. Martin Sonkin  
 Mr. James E. Spencer  
 Mr. Ethan B. Stanley II  
 Starr Companies  
 Dr. Robert A. Stauffer  
 Abbot and Dorothy H. Stevens  
 Foundation  
 Dr. David B. Stoll  
 Mr. and Mrs. John Strawbridge  
 Mr. Eugene T. Thomas  
 Mr. Bruce E. Thompson  
 Mr. Radclyffe F. Thompson  
 Mr. Thomas W. Toch  
 Ms. Verneice Turner and  
 Mr. Douglas May  
 Mr. John C. Vaughey  
 Mr. and Mrs. Bruce Vogt  
 Ms. Lynn Warshow  
 J. W. Thomson Webb, Esq.  
 Ms. Sarah Elliston Weiner  
 Mr. Harold R. Werner, Jr.  
 Ms. Carol Whayne  
 Mr. Seth W. Whitaker  
 Mr. Larry Stanton Wiese  
 Dr. Marjorie J. Williams  
 Dr. Asa G. Yancey

## **FRIEND** **LESS THAN \$100**

Mr. John W. Ager III  
 Ms. Susan Alter  
 Ms. Julia Arce  
 Mr. Paul J. Barringer  
 Dr. and Mrs. Edmund S. Bartlett  
 Mr. and Mrs. Geoffrey Bentley  
 Ms. Nancy Beres  
 Mrs. Lee Berger  
 Dr. and Mrs. John Berry  
 Mrs. Brenda Block  
 Ms. Lucy Bolton  
 Mr. D. McGregor Brandt, Jr.  
 Mr. David B. Brawer  
 Mr. J. Robert Brown  
 Mr. Stephen F. Brown  
 Ms. Ann Cerrone



Mr. Alexander Cheffer  
 Mr. Ralph A. Cohen  
 Mr. and Mrs. H. Calvin Cook  
 Mrs. Shirley A. Cruickshank  
 Mr. Stephen Culberston  
 Mr. William M. Davis  
 Mr. Stephen M. Dembski  
 Ms. Nancy L. Dempsey  
 Mr. John C. Diamante  
 Miss Catharine-Mary Donovan  
 Ms. Barbara Douglas  
 Ms. Saran Doumbouya  
 Ms. Virginia Obrecht Dulworth  
 Ms. Dianne E. Emmick  
 Ms. Anna Erendzenova  
 Mr. John W. Ewell  
 Ms. Phyllis Feinberg  
 Mr. and Mrs. Paul Feinstein  
 Mr. and Mrs. Daniel J. Foraker  
 Mrs. Patti Gallagher  
 Mr. and Mrs. Rowland Girling  
 Mr. John L. Griffin  
 Ms. Emily Grinshpon and  
     Ms. Briana McKenna  
 Mrs. Tish Hall  
 Mr. Kevin Hanratty  
 Ms. Lisa Hanson  
 Mr. Lawrence Hauptman  
 Ms. Janice Jacobs  
 Mr. Miles Hutton Jacoby  
 Mr. John W. R. Jenkins  
 John L. and Sue Ann Weinberg Foundation  
 Mr. T. Paul Kane  
 Dr. John Michael Kosterlitz  
 Ms. Gloria A. Laverty  
 Mr. Donghyun Lee  
 Miss Liya Lekvinadze  
 Mr. and Mrs. Kevin Long  
 Mr. Donald C. Lucas  
 Mr. and Mrs. Robert H. Lugg  
 Mrs. Gloria Mandly  
 Mr. and Mrs. Robert Martin  
 Mr. and Mrs. John McCarthy  
 Mr. William H. McClendon III  
 Miss Julia Dorry McDonald  
 Mr. and Mrs. Thomas B. McGowan  
 Mr. Dick McGrath and  
     Ms. Charlotte Henke  
 Mrs. Charles E. McKenney  
 Mr. and Mrs. John W. McKenzie  
 Ms. Laura B. Millar  
 Mrs. Priscilla L. Moxley  
 Ms. Elena Tompkins Mucciarone  
 Ms. Donna Northcott  
 Mr. and Mrs. Andrew Oglesby  
 Col. H. David O'Malie  
 Ms. Nell Pallotta  
 Ms. Anne Passantino  
 Mr. Peter Patterson and  
     Ms. Lynne Moore  
 Mrs. Delphine M. Peck  
 Mr. James A. Peden, Jr.  
 Mr. and Mrs. George R. Pryde  
 Ms. Deborah Rath  
 Ms. Hilda Regier  
 Mr. and Mrs. Charles C. Rieger, Jr.

Dr. Ilan Riss  
 Mrs. Gloria A. Roberts  
 Mr. and Mrs. Michael Rosenberg  
 Ms. Jean Saklad  
 Mr. Robert Schmidt  
 Ms. Elizabeth A. Schultz  
 Mrs. Susan Shelby  
 Mr. Jeffrey G. Smith  
 Dr. and Mrs. David J. Steinberg  
 Ms. Beverly L. Stewart  
 Dr. and Mrs. Owen Tabor  
 Miss Yin Yin Thein  
 Ms. Anne Tiffany  
 Mr. and Mrs. William H. Told, Jr.  
 Mrs. Irene Tregear  
 Ms. Susan Turrini  
 Mrs. Patricia Urlick  
 Ms. Alexandra Van de Kamp  
 Ms. Karen Vedad  
 Mr. Charles H. Welles  
 Mrs. William White III  
 Mr. Charles Whitehead  
 Ms. Lisa Williams  
 Mr. and Mrs. Andrew Williams  
 Ms. Kitty Williston  
 Ms. Gina Winter  
 Ms. Robin Woodard  
 Anonymous 1  
 Anonymous 2

## IN KIND SUPPORTERS AND PARTNERS

American Shakespeare Center  
 Art Deco Society of New York  
 Avon Old Farms School  
 Bellevue/NYU Program for Survivors of Torture  
 British American Drama Academy  
 British Schools and Universities Club of New York  
 Brooklyn Grange  
 Brooklyn Academy of Music  
 Brooks Brothers  
 Brotherhood Synagogue  
 CAMBA  
 Center for Jewish History  
 Central Synagogue  
 Claremont McKenna College  
 Columbia University School of Social Work  
 Culver Academies  
 The Daily Show  
 Emma Willard School  
 ESU of the Commonwealth  
 ESU New York Branch  
 Ethel Walker School  
 Flushing Bank  
 Fourth Universalist Society of New York  
 The Governor's Academy  
 HIAS  
 Historic Royal Palaces  
 Hutchison School  
 HNTB  
 Hot Bread Kitchen  
 International Rescue Committee  
 JCC Manhattan  
 Kent School  
 Lawrenceville School

Lincoln Center Theater  
 Marble Collegiate Church  
 Gregory Meredith  
 The Morgan Library & Museum  
 NEST+m  
 New Women New Yorkers  
 New York Junior League  
 New York Police Department  
 New York University  
 NYC Mayor's Office of Immigrant Affairs  
 NYS Office of New Americans  
 NYU Silver School of Social Work  
 Oxford English Dictionary  
 Per Scholas  
 Person Place Thing  
 Public Theater  
 Rabun Gap-Nacooche School  
 Ravenscroft School  
 RIF  
 Riverside Language Program  
 Royal Oak Foundation  
 Safe Passage Project  
 Schnader Harrison Segal & Lewis  
 Shakespeare Birthplace Trust  
 Shakespeare Guild  
 Shakespeare's Globe  
 St. Bartholomew's Church  
 St. George's Society  
 St. Ignatius Loyola Church  
 StreetWise Partners  
 The Stony Brook School  
 Temple Emanu-El  
 The Tenement Museum  
 Tisch Center of the Arts  
     New York University  
 University of Edinburgh  
 Unitarian Church of All Souls  
 University of Oxford  
 Upwardly Global  
 Walker's Shortbread  
 West End Secondary School  
 Western Reserve Academy  
 Westminster School  
 Woodberry Forest School  
 World Education Services (WES)



# Financial Report

Condensed Statement of Activities  
July 1, 2018 – June 30, 2019

Unaudited and exclusive of Branch activities

## OPERATING REVENUES

Private Support	605,831
Earned Revenue	914,727
Investment Return for Operations	682,888
Contributed Goods and Services	289,000

**TOTAL** **\$ 2,492,446.00**

## OPERATING EXPENSES

### Program Services

Membership and Branch Services	288,258
Immigrant Support Programs	451,569
Student Teacher Programs	522,015

**Total Program Services** **\$ 1,261,842**

### Supporting Services

Management & General	990,384
Special Event/ Fundraising	186,606

**Total Supporting Services** **\$ 1,176,990**

**TOTAL** **\$ 2,438,832**

Operating Gain (Loss) for FY 2018-2019 **\$53,614**

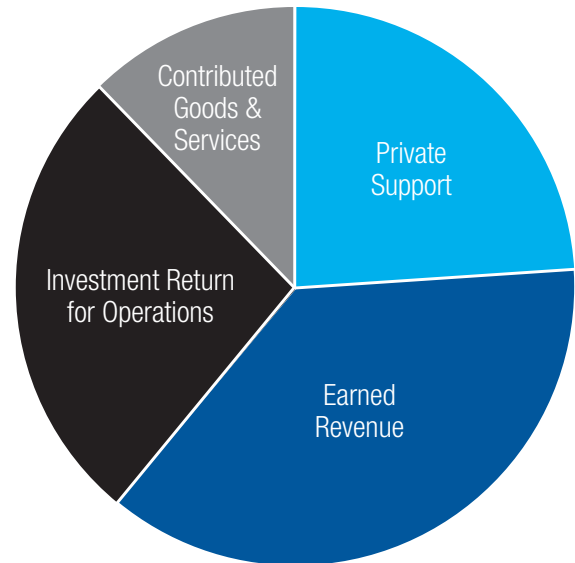
## ASSETS as of 07.01.2018 **\$ 18,433,573**

Endowment Investment Capital	13,161,912
Cash as of 06.30.19	171,545
Property as of 06.30.19	3,783,512

**ASSETS as of 06.30.2019** **\$ 17,116,969**

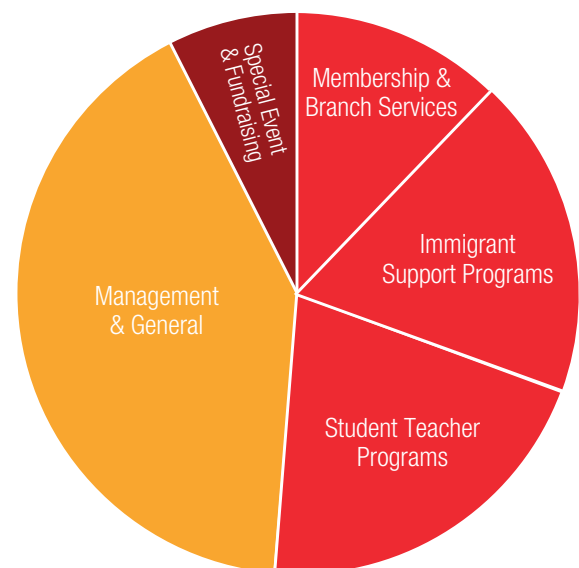
Gain (Loss) on assets **\$ 1,316,604**

Complete financial statements are available on our website:  
[www.esuus.org/about/financial\\_statements](http://www.esuus.org/about/financial_statements)



## Operating Revenues

Private Support	24%
Earned Revenue	37%
Investment Return for Operations	27%
Contributed Goods & Services	12%



## Operating Expenses

Program Services	52%
Immigrant Support Programs	19%
Membership & Branch Services	12%
Student Teacher Programs	21%
Management & General	41.5%
Special Event/ Fundraising	7.5%





## The English-Speaking Union

# Board & Staff

Officers and Board of Directors as of June 30, 2019

### ESU OFFICERS

**Dr. Paul Beresford-Hill CBE, KSt.J**  
Chairman, New York, NY

**John J. Raffaeli**  
Vice Chair, Corolla, NC

**Dr. E. Quinn Peeper**  
President, New Orleans, LA

**Karen Karpowich**  
Secretary of the Corporation, New York, NY

### ESU BOARD OF DIRECTORS

**Dr. Cheryl A. Albuquerque**  
San Francisco, CA

**Donald Best**  
Los Angeles, CA

**Dr. Karen Blair-Brand**  
State College, PA

**Janet Haedicke**  
Monroe, LA

**Julia Hansen**  
Palm Beach, FL

**Duncan Karcher**  
New York, NY

**James W. Kerr, Jr.,**  
Dallas, TX

**Lisa Kressbach**  
New York, NY

**David Martinelli**  
New York, NY

**William B. Maschmeier**  
Seattle, WA

**Darryl McCormick**  
Stamford, CT

**Bettie McGowin Miller**  
Chapman, AL

**Donna Miller**  
Winter Park, FL

**Mary Alice Phelan**  
Jacksonville, FL

**Charles D. Reaves**  
Memphis, TN

**Jeffrey L. Schnabel**  
Kansas City, MO

**Dr. Susan (Robin) Sinclair**  
Nashville, TN

**Noel Sloan**  
New York, NY

**Dr. Julia C. Van de Water**  
Lexington, VA

**Mathew B. West**  
New York, NY

**Ralph Wyndrum**  
Fair Haven, NJ

### ESU STAFF

**Nicole Hargrove**  
Bookkeeper

**Karl Hart**  
Program Officer, Student Services

**Rossana Ivanova**  
Director of Development

**Karen Karpowich**  
Interim Executive Director

**Joshua Keppel-González**  
Communications & IT Manager

**Carol Losos**  
Director of Education

**Edward Mohylowski**  
Deputy Executive Director

**Kathryn Morrisett**  
Membership & Database Manager

**Annelise Nussbacher**  
Education Coordinator

**Karen Ruelle**  
Manager, English in Action

**Betty Trevino Roth**  
Senior Manager, School & Teacher Programs

**Rona Weitz**  
Senior Manager, Immigrant Programs

**Noel Williamson**  
Custodian



The English-Speaking Union

144 East 39th St. | New York | NY 10016

The English-Speaking Union  
of the United States  
**Annual Report 2019**



The English-Speaking Union

[www.esuus.org](http://www.esuus.org)