



The English-Speaking Union

English in Action

2016



The English-Speaking Union of the United States

Annual Report | 2016 Table of Contents

Messages from the Chairman and Executive Director	1
The ESU Today	2
ESU Mission	3
English in Action	4
Andrew Romay New Immigrant Center (ARNIC)	5
Shakespeare Teacher Programs	6
National Speakers Program	6
National Shakespeare Competition	7
British University Summer School Scholarships (BUSS)	8
Luard Morse Scholarships	9
Secondary School Exchange (SSE)	9
Walter Hines Page Scholarship	10
International Public Speaking Competition	10
Middle School Debate	11
Branches	12
Branch Activities	13
ESU Resolution	14
Annual Conference	15
National Patrons Program	16, 17
Supporters/ Legacy Society	18, 19
Financial Report	20
Board and Staff	21

Cover: Ari Dalbert from Honolulu, HI, winner of the 33rd annual English-Speaking Union National Shakespeare Competition.

The English-Speaking Union of the United States
144 East 39th St. | New York | NY 10016
www.esuus.org | info@esuus.org



*“ . . . participate in
a vibrant and exciting
community that has its eyes
firmly set on the future.”*

Message from the Chairman

This has been a milestone year in the history of the English-Speaking Union, as many initiatives, which have been developed and nurtured by my predecessors, have now come to fruition. The ESU is poised to face its second century with a renewed vision and confidence.

The reorganization of the 58 branches, which constitute our membership and support our programs, has been well received. The streamlined management and administration of a diverse and vibrant group of ESU communities has been effectively coordinated by our head office, and a new sense of unity prevails. That unity exhibits itself in the variety of exciting programs and offerings that members support and by the fact that so many members across the nation contribute to national initiatives such as the National Shakespeare Competition and the British University Summer School scholarships.

This year's strategic planning has set the tone and the direction of the ESU, and it is incumbent on us to support its initiatives and embrace its vision. Our founder, Sir Evelyn Wrench, had a clear sense of the mission of the ESU. The passage of a century has not obscured that mission, and it

has been my privilege to be part of the strategic planning discussions affirming Sir Evelyn's goals and his sense that through the English language we can transcend race and embrace fellowship.

Our new Strategic Plan reflects our desire to further the use of the English language as a vehicle for communication and outreach to communities within the United States and overseas. Our focus on English in Action as a descriptive phrase identifying what and who we are reflects the educational programs we have developed and the innovations we continue to encourage in providing for non-English speakers and new immigrants, giving them access to opportunity and security.

I urge you to attend our events, at your local branch and at national headquarters, and participate in a vibrant and exciting community that has its eyes firmly set on the future.

Dr. Paul Beresford-Hill CBE KSt.J

Chairman | The English-Speaking Union of the United States



*“English in Action”
perfectly describes the
English-Speaking Union
this year.*

Message from the Executive Director

At all levels, the ESU has been proactively strategizing and restructuring for increased impact as a catalyst for global understanding in our turbulent, shrinking world. While “English in Action” has been the brand name of our preeminent, time-tested, one-on-one conversation program, it also truly depicts the work of our Andrew Romay New Immigrant Center (ARNIC), middle school debate, exchange and study abroad courses for students and teachers — all the programs outlined in this 2015-2016 fiscal year Annual Report.

Through its century of achievement, the ESU has periodically recast itself in response to the changing contexts of society and its constituents and beneficiaries. A major achievement this year was the reformation of ESU branches into Limited Liability Companies (LLCs) to provide enhanced legal and administrative strength nationally and locally. Simultaneously, the ESU National Board of Directors enthusiastically engaged in a series of strategic planning sessions, beginning to clarify and focus the work we do within our mission. We are setting

English into action to promote creative and confident civil discourse, enabling individuals — immigrants, students and teachers — to rise to their full potential, thrive as global citizens, and join worldwide in pursuing conditions for peace. I am deeply grateful that the English-Speaking Union of the United States National Board and Branch leaders are actively reconstructing the ESU to be relevant as a prominent educational charity, to break down barriers of ignorance and misunderstanding in the world ten, twenty, and fifty years from now.

This year, as we built on the strength of the ESU's traditions to expand its programs to meet the needs of today, we marveled that our mission has proven both timeless and timely. Enjoy reading about our progress in this 2016 Annual Report.

Christopher Broadwell

Executive Director | The English-Speaking Union of the United States

The ESU employs English as a catalyst to foster global understanding and good will through educational opportunities and cultural exchange programs. In a shrinking world dominated by dollars and digits, bloody national borders

The ESU Todaye

and unprecedented numbers of displaced persons, the ESU believes in building a better world through the English language and international exchange. We work to inspire common bonds, person-to-person, one conversation, one presentation and one exchange at a time. By promoting creative and confident civil discourse, we enable participants to rise to their potential as individuals, thrive as global citizens, and join worldwide in pursuing conditions for peace.

More than

61,700

Served in 2015-16

8,200
middle school students

40,000
high school students

5,800
teachers

1,250
volunteers

700
English learners

1,250
schools

6,000
members

ESU Mission:

“The ESU celebrates English as a shared language to foster global understanding and good will by providing educational and cultural opportunities for students, educators, and members.”

ESU members work together locally and nationally to foster global understanding through a variety of educational, cultural and social programs. The ESU’s national programs are supported by its unrestricted endowment and corporate and foundation grants as well as by the generosity of members.

Members benefit from the personal relationships and international exposure gained from ESU activities and events while they provide financial and volunteer support to sustain ESU educational programs.

ESU Programs

English in Action (EiA)

Andrew Romay
New Immigrant Center (ARNIC)

British University Summer School
Scholarships (BUSS)

Middle School Debate

National Shakespeare Competition

Shakespeare Teacher Programs

Luard Morse Scholarships

Secondary School
Exchange (SSE)

International Public
Speaking Competition

Walter Hines Page Scholarship

National Speakers Program



Engaging
448
tutors
and
688
students

28,000
volunteer hours



English in Action (EiA)

Since
1976

EiA pairs newcomers to the US with volunteers, fluent English speakers, for one-on-one conversation sessions, helping them master conversational English and learn about life in the US while also fostering cross-cultural exchange. A hallmark of the program is its comprehensive tutor training for the volunteers, which emphasizes the best practices in cross-cultural learning and leadership development. Expanded tutor trainings focused this year on cultural competency and working with refugees.

Branch EiA programs include: Portland (OR), Seattle (WA), Columbus (OH), Lexington (VA), Monmouth County (NJ), and New Orleans (LA).



*“English in Action
is my family
in America.”*

EiA/ARNIC student



Since
2013

Andrew Romy New Immigrant Center (ARNIC)

ARNIC is committed to improving the lives of new immigrants by providing a welcoming environment, resources, and information to help them improve their English to explore work and study opportunities, network, pursue citizenship, and acquire cultural fluency in order to participate fully in American society. Members receive a one-year scholarship to participate in English in Action, ARNIC English language classes, workshops and cultural and civic trips and events.

ARNIC partnerships grew exponentially this year, with deepening relationships with organizations including StreetWise Partners and the New York Junior League both of which have laid the foundation for a special business mentorship program to pair recent immigrants with American professionals.



At the 2016 ARNIC graduation ceremony, Falonne Beljuby Billy Dembi, from the Republic of Congo, spoke on behalf of her fellow graduates, thanking Andrew Romy, the program founder and primary underwriter, the teachers and volunteers for their continuous support and encouragement, saying:

“This is a brilliant idea to create this program and help new immigrants from all over the world. Mr. Romy planted these seeds in us, watered us and today he can see the fruits of his labor! We are the fruits of this program that helps immigrants and refugees like myself to find friends, learn English and feel more confident in our new country.”



Serving
more than
500
recent immigrants
from
66
countries of origin
since its inception

365
ARNIC members
in 2015-2016



Since 2010 Shakespeare Teacher Programs



Engaging
270
educators from
17
states
impacting
27000
students

English and drama teachers nationwide returned to their classrooms better prepared to teach Shakespeare, after attending English-Speaking Union Teaching Shakespeare Workshops, produced in partnership with the world-renowned Folger Shakespeare Library.

As part of Shakespeare400, the international yearlong celebration of the Bard's legacy, the 2016 workshops focused on teaching the 1623 First Folio, the first collection of Shakespeare's works including the first-known printing of many of his plays. ESU Teaching Shakespeare Workshops underwritten by ESU Branches took place in Honolulu (HI); Syracuse (NY); Fort Lauderdale (FL); Red Bank (NJ); Providence (RI); Kansas City (MO) and New York City. Among the ESU's partner organizations in the workshops were the Kansas City Public Library, the New-York Historical Society, Brown University, LeMoyne College and Two River Theater of NJ. Additionally, ESU Branches in Central Florida, Los Angeles, Oklahoma City and Tulsa (OK) organized independent summer Shakespeare workshops for teachers.

Since 1920 National Speakers Program

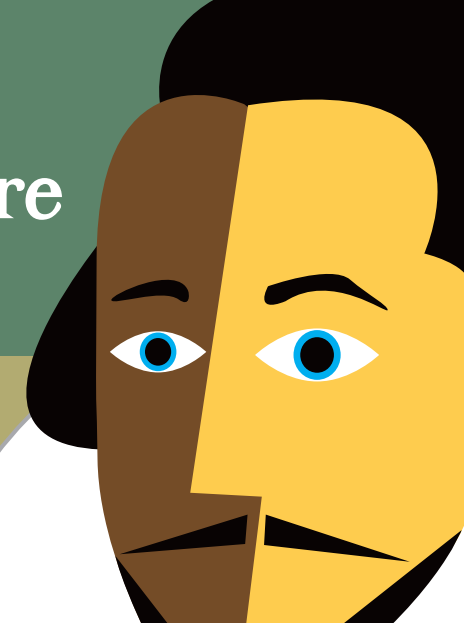
The Evelyn Wrench Speaker Tour, named for the ESU founder, presented prominent lectures in the fields of history, politics, the arts, literature and current events in cities across the country through the network of ESU Branches. The ESU national office underwrote the program and planned them with the cooperation of the Branches. This year's Wrench speakers were Richard Buckley OBE, Co-Director of the University of Leicester Archeological Services, speaking on *The King Under the Car Park: The Search for Richard III*; Simon Claxton, Retired English schoolteacher and former ESU Exchange Student on *Meeting William Faulkner: How an English Schoolboy Found a Literary Lion*; The Lord Lisvane KCB, Retired Clerk of the House of Commons on *A Universal Charter? The Legacy of the Magna Carta*; Robert Hulse, Director, London's Brunel Museum on *Isambard Kingdom Brunel: A Victorian Frank Lloyd Wright*; Sir Christopher Hum KCMG, Former British Ambassador to China on *Taking Tea with the Dragon – Will China Rule the World?*; and Paul Edmondson, Head of Research and Knowledge, Shakespeare Birthplace Trust on *Shakespeare at 400: Why?* Andrea Mays, Author and Professor of Economics, Cal State University at Long Beach also toured under the National Speakers Program with *The Millionaire and the Bard: Henry Folger's Obsessive Hunt for Shakespeare's First Folio*.



7 Evelyn Wrench Speakers traveled to all **8** Regions and spoke to **2,477** members and friends at **47** Branches

Since 1983 National Shakespeare Competition

Serving more than **300,000** high school students since its inception
2,200 teachers and **21,500** students annually
in **850** competitions in **55** ESU Branch communities



The ESU National Shakespeare Competition is a school-based program for teachers designed to develop speaking skills, critical thinking and an appreciation of literature. Students read, analyze, perform and recite Shakespeare monologues and sonnets in three qualifying stages: at the school, community and national levels. It is the only national Shakespeare competition exclusively for high school students.

The 33rd annual English-Speaking Union National Shakespeare Competition occurred on May 2, 2016 on stage at Lincoln Center Theater in New York and drew 55 nationwide winners of ESU Branch competitions. Ari Dalbert from Honolulu, HI, won the first prize, a full scholarship to the Royal Academy of Dramatic Art Young Actors Summer School in London, England. The second place winner, Zoë Oliver, representing the ESU Greenwich Branch, won a scholarship to the American Shakespeare Center Theatre Camp in Staunton, VA, while third place winner, Cecilia Harchegani, from the ESU San Diego Branch, received \$500 from The Shakespeare Society.



The National Shakespeare Competition participated in Shakespeare400, the international yearlong celebration of Shakespeare's legacy and marked the milestone of exceeding 300,000 student participants since its inception in 1983.

"I believe this program to be one of the most valuable ways I can demonstrate to students that Shakespeare is still relevant to many people."
Competition Teacher



Finals Judges with the competition winners - l to r: Peter Francis James, Louis Scheeder, Cecilia Harchegani, Ari Dalbert, Zoe Oliver, Ralph Alan Cohen, Heidi Griffiths and Dana Ivey

Since 1957 British University Summer School (BUSS) Scholarships

BUSS Scholarships provide American high school teachers the opportunity to continue their education at prestigious centers of learning in the United Kingdom: Oxford University, Shakespeare's Globe and Edinburgh University. Through nearly 60 years, ESU BUSS scholars from all over the US have returned from their studies to their classrooms invigorated and equipped to share their newly acquired teaching and learning strategies with more than 200,000 students nationwide.



"Incredible, fascinating, amazing and similar adjectives don't quite capture the full impact that it had on us, so instead I'll use Shakespeare's own words:
*"O wonderful, wonderful, and most wonderful, wonderful!
 And yet again wonderful! And after that, out of all whooping."*
 It's as you like it, and we loved it!

Gary Mendoza
 New Orleans Branch BUSS Scholar



Has served more than
2,500
 American high school and middle school teachers since its inception

54
 participants in 2015-2016



Since 1969 Luard Morse Scholarships

Luard Morse Scholarships provide \$25,000 merit awards for top students attending United Negro College Fund institutions, or Howard and Hampton Universities, to spend a semester of study at the English university of their choice.

Talia Sharpp (pictured right, top), a Political Science major from Broadview, IL, and Adaya Sturkey (pictured right bottom), Biology major from Marion, SC, both students at Hampton University, were selected as recipients of the English-Speaking Union Luard Morse Scholarship. Each scholar received \$25,000 toward a semester of study at an English university during the 2016-2017 academic year.

Speaking on behalf of the English-Speaking Union Luard Morse Scholarship Selection Committee, Darrell Hill observed that "Talia and Adaya represent the highest caliber of student scholars in our country." He said that "...the committee members are delighted to welcome them to the family of 75 English-Speaking Union Luard Morse Scholars who, since 1969, have performed with distinction at 19 British Universities, including Cambridge; Oxford University; Kings College, London; and the London School of Economics. We wish them the very best in their future endeavors."

Talia looks forward to attending the University of London, and Adaya, Oxford.



Has sent
77
 Scholars to
19
 English universities since its inception

Since 1928 Secondary School Exchange (SSE)

SSE is a merit-based scholarship that provides tuition and room and board for US students to spend a semester or year between high school and college (known as a "gap year") at a British or Argentine boarding school, and for UK students to spend their gap year at select US schools.



18 US participants studied in the UK and Argentina;
19 UK participants and **1** Argentine participant studied in the US

Serving
38
 students and
40
 independent schools in the US, the UK and Argentina

Since 1924 Walter Hines Page Scholarship

Named for the Honorable Walter Hines Page, American Ambassador to the Court of St. James's during World War I, this scholarship offers British and Argentine educators the opportunity to explore and exchange educational expertise as they travel to the US to study an aspect of education relevant to their own professional interests and development. Sponsored by the ESU of the Commonwealth and ESU Argentina, this international exchange of techniques and ideas benefits the educators – and their students – on three continents.



Awarding
3
educators
from the UK
and
1
educator from
Argentina
travel grants to
the US with
16
ESU Branches
hosting them

Since 1981 International Public Speaking Competition

Fifty English-Speaking Unions around the world send young competitors to the ESU of the Commonwealth in London for a week in which they compete at public speaking and participate in a range of activities centered on communication and cultural exchange. The ESU sent Shelby Ragin, sophomore at The Peddie School in Hightstown, NJ, to London to represent the US this year.

Competitors visited and participated in workshops at Shakespeare's Globe, attended a theater performance in London's West End, and worked with some of the ESU of the Commonwealth's most experienced speech and debate mentors.



Serves
more than
40,000
young people
from
50
countries
around the globe

Since 2011 Middle School Debate

ESU Middle School Debate is an educational initiative for students in grades 5 to 8 – launched with support from the National Endowment for the Humanities – designed to help young adolescents develop critical thinking and language arts skills. The ESU partners with the Claremont McKenna College Middle School Public Debate Program, international leaders in the field, to establish inter-school debate programs in ESU Branch communities.

The ESU Middle School Debate Program grew significantly this year. It now includes three leagues in New York, two in New Jersey, and one in Washington, DC. More than 50 public, private, parochial, and charter schools participated, engaging more than 1,700 teenagers in weekly after-school debate activities, a record number for the program.

The ESU organized 23 day-long Saturday tournaments across the six leagues. A total of 45 schools participated in at least one tournament, 29 of which went on to compete in the second ESU Northeast Regional Championship Tournament in April. More than 800 students debated. The ESU trained 260 volunteer judges for the tournament debates. This level of support from volunteers and partners enabled more than 1,500 debate rounds for a total of 45,000 minutes – equivalent to more than a full month spent debating. Additionally, the ESU organized two teacher debate workshops, attended by 70 middle school teachers from 42 schools in New York and New Jersey.

The Sandhills (NC), Columbus (OH) and Greenwich (CT) Branches administered independent student debate programs.



Serving more than
1,700
individual debates
in 2015-2016



*“Debate not only makes me a better student,
it makes me a better human being.”*

Student Debater | Broad Street Middle School, Bridgeton, NJ

ESU Branches

Headquartered in New York City and incorporated in the State of Delaware, the ESU coordinates its programs through its network of Branches nationwide. An independent American corporation, The English-Speaking Union of the United States also works in fellowship with more than 50 independent ESUs around the world, most closely with The English-Speaking Union of the Commonwealth in London.

The ESU Branches are the local delivery system of the ESU mission through their programs. Their committed volunteers are invaluable in sustaining the educational and cultural functions of the Branches in promotion of the mission.



- | | | |
|--|--|--|
| ALABAMA
Birmingham | KENTUCKY
Louisville | OKLAHOMA
Oklahoma City
Tulsa |
| ARIZONA
Tucson | LOUISIANA
New Orleans
Shreveport | OREGON
Portland |
| CALIFORNIA
Desert (Palm Springs)
Los Angeles
San Francisco | MASSACHUSETTS
Boston | PENNSYLVANIA
Central Pennsylvania
Philadelphia |
| COLORADO
Denver | MICHIGAN
Detroit | RHODE ISLAND
Newport |
| CONNECTICUT
Greenwich | MISSISSIPPI
Jackson | SOUTH CAROLINA
Charleston
Columbia |
| DISTRICT OF COLUMBIA
Washington DC. | MISSOURI
Kansas City
St. Louis | TENNESSEE
Memphis
Nashville |
| FLORIDA
Central Florida
Jacksonville
Miami
Naples
Palm Beach | NEW JERSEY
Monmouth County
Princeton | TEXAS
Austin
Dallas
Houston |
| GEORGIA
Atlanta
Savannah | NEW YORK
Albany
New York
Syracuse | VIRGINIA
Charlottesville
Lexington
Richmond
Southwest Virginia
(Roanoke) |
| HAWAII
Honolulu | NORTH CAROLINA
Charlotte
Colonial (New Bern)
Greensboro
Research Triangle (Raleigh)
Salisbury
Sandhills (Pinehurst) | WASHINGTON
Seattle |
| ILLINOIS
Chicago | OHIO
Cincinnati
Cleveland
Columbus | |
| INDIANA
Indianapolis | | |



Branch Activities

55 branches participated in the National Shakespeare Competition engaging 21,578 high school students nationally. 26 branches provided fellowships for 42 British University Summer School scholars. 8 branches held Shakespeare Teacher Programs. 7 Evelyn Wrench speakers traveled to all 8 Regions and spoke to 2,477 members and friends at 47 branches. 16 branches hosted foreign educators through the Walter Hines Page program and 8 branches administered English in Action sessions.

ESU Branches dispense
\$350,000
in education funding annually.



Honoring ESU President Emerita Doe Thornburg

Resolution of

The Board of Directors of The English-Speaking Union of the United States

June 6, 2016

Whereas:

Marie Dora Thornburg OBE has dedicated her personal and professional life to forging global understanding and has vigorously advanced the work of the English-Speaking Union of the United States through more than 50 years as Member, Regional Chairwoman, Delegate to the ESU International Council, National Board President and now President Emerita.

Whereas:

As a National Board Member since 1989, Doe, with grace, poise and resolve, has served as an ambassador representing the organization to its members across the country and to scholars, educators, diplomats and men and women like herself interested in establishing peaceful common bonds across international boundaries.

Whereas:

The indefatigable Doe has announced that she can no longer be present at all ESU National Board events.

Now, therefore, be it resolved that:

The English-Speaking Union of the United States National Board of Directors recognizes Doe Thornburg's ever present spirit as President Emerita and acknowledges Doe as the epitome of the ideal ESU member dedicated to celebrating English as a shared language to foster global understanding and good will.

Dr. Paul Beresford-Hill CBE, KSt.J
Chairman

Dr. E. Quinn Peeper
President

Christopher Broadwell
Secretary of the Corporation
Executive Director



The English-Speaking Union
Education. Scholarship. Understanding.

ESU Annual Conference

New York City | October 10 - 12, 2015

The ESU National Conference and Annual General Meeting

The 2015 ESU Conference, with the theme *George Washington Takes New York City*, took place on October 10 - 12, at the Hilton Doubletree Metropolitan Hotel in midtown Manhattan. Branch leaders were specifically invited to a day-long Conclave with the National Board Members on Saturday just prior to the formal opening of the Conference.

Organized by National Headquarters staff, the ESU National Conference comprised a series of meetings, lunches, dinners, receptions and tours over the Columbus Day weekend. Members assembled on Saturday evening after the morning Board meeting and afternoon Presidents Conclave, for a reception and opening dinner in the hotel's Chrysler Room, with close-up views of the Art Deco style Chrysler Building to the south. Noted author and prominent historical biographer, Flora Fraser, spoke after dinner about her new biography *The Washingtons, George and Martha: Join'd by Friendship, Crown'd by Love* being published by Knopf.

Sunday was a busy day, including regional meetings, and a buffet luncheon with Director General of the English-Speaking Union of the Commonwealth, Jane Easton, providing remarks and offering a suggested new vision for the ESU under the rubric "Discover Your Voice," and the Annual General Meeting. In the evening, National Patron donors journeyed by chartered coach to the historic Morris-Jumel Mansion, a house museum property of the Historic House Trust of New York City, located in the Washington Heights section of Manhattan. During the American Revolution, George Washington and his patriot officers moved into the house, making it their headquarters for five weeks in the autumn of 1776. It was a strategic location, because the house offered a full view of Manhattan and both the Hudson and Harlem Rivers. There, ESU National Patrons enjoyed a lavish reception co-sponsored by the New York Branch, as well as informative guided tours of the property lead by the museum's curatorial staff.

The conference concluded on Monday with a bagel breakfast sponsored by the New York Branch at National Headquarters and a walking tour of sites connected to George Washington in the Wall Street area of Manhattan.



With Thanks

NATIONAL PATRON PROGRAM

The English-Speaking Union extends its gratitude to, and is pleased to recognize, the following individuals who generously participated in the English-Speaking Union National Patron Program during 2015-2016. Their generosity provided critically needed unrestricted operating support for the ESU and its Branches during the year.

WALTER HINES PAGE SOCIETY \$10,000 TO \$14,999

Dr. Paul Beresford-Hill CBE KSt.J
Mr. Donald A. Best/The London Best
Charitable Gift Fund
Mr. William R. Miller CBE KSt.J
Dr. E. Quinn Peeper and
Mr. Michael D. Harold

NATIONAL FELLOWS \$5,000 TO \$9,999

Mrs. Gina Goldhammer
Mr. and Mrs. Robert P. Morse

CHAIRMAN'S CIRCLE \$2,500 TO \$4,999

Mr. Peter Buffington
Ms. Julia Hansen
Mrs. Phyllis G. Heard
Mrs. Natalie T. Pray
Malcolm S. Pray, Jr. Foundation, Inc.
Dr. and Mrs. George W. Ray III
Mr. Roger F. Stacey and
Dr. Maureen Lynch

VICE CHAIRMAN'S CIRCLE \$1,500 TO \$2,499

M. Christine Carty, Esq.
Dr. Loveday L. Conquest and
Mr. Fred Kleinschmidt
Mrs. Polly Williams Cox
Mr. William B. Maschmeier and
Ms. Patricia Haggerty
Dr. Christopher Medalis
Dr. Brian A. Ragen
Mr. Jeffrey L. Schnabel

PRESIDENT'S CIRCLE \$1,000 TO \$1,499

Mr. Frank Paul Barber
Mrs. Christine M. Brown
Mr. and Mrs. Nathaniel B. Day
Ms. Susan E. Thurston Grathwohl
Mrs. Betty Price Gregory
Ms. Eileen Hart-Hubbell
Mr. Kenneth Hubble
Mr. and Mrs. Thomas H. Huss
Mr. and Mrs. Michael J. Kakos
Mrs. Alice La Prelle
Mrs. Gavin G. K. Letts
Ms. Anne C. Miller
Ms. Patricia Ann Moore
Mr. and Mrs. H. B. Nicholson III
Mr. Lee Pollock

Dr. Grace (Sid) Ray
Mr. and Mrs. Charles D. Reaves
Ms. Sally Richards
Mr. and Mrs. Stanley DeForest Scott
Dr. Susan (Robin) Sinclair
Mrs. Shirley P. Spears
Mrs. Marie Dora Thornburg OBE
Mr. and Mrs. George T. Williamson

NATIONAL SUSTAINER \$750 TO \$999

Mr. and Mrs. Jacques Moore
Mr. and Mrs. Dave Williams
Mrs. Donna M. Miller
Ms. Laura J. Phelps

NATIONAL SPONSOR \$500 TO \$749

Mr. Matthew Barhydt
Mrs. Elizabeth Bergan and
Mr. Robert Laidlaw
Dr. Karen Blair-Brand
Ms. Frances Alison Bok
Ms. Elizabeth Brothers
Dr. and Mrs. Maxwell Caskie
Mr. and Mrs. Thomas J. Cooney
Mr. and Mrs. Henry Darlington, Jr.
Miss Barbara M. Deacon
Mr. and Mrs. Jacques Dejoux
Dr. and Mrs. Kenneth R. Dorman
Mrs. Mary Suzanne Dunea
Mrs. Ernest A. Eddy
Ms. Elizabeth R. Etoll
Mr. and Mrs. Charles J. Frankel III
Mr. Peter Frey and Ms. Carrie Shapiro
Ms. Susan Gibson
Mrs. Fredrick H. Gohl, Sr.
Dr. and Mrs. Solomon Golomb
Dr. and Mrs. Albert C. Gordon
Mr. Paul J. S. Haigney
Dr. Susan Ford Hammaker
Mr. O. Delton Harrison, Jr.
Mr. and Mrs. Wyatt R. Haskell
Mr. and Mrs. Darrell W. Hill
Dr. Christopher Hodgkins
Mr. Dennis Hummel
Ms. Marjorie L. Kennedy
Judge James W. Kerr, Jr.
Ms. Barbara B. Kiffmeyer
Ms. Cherilyn Lawrence
Mr. and Mrs. H. Pettus LeCompte
Mr. and Mrs. Lou Lowenkron
Mr. and Mrs. Edward W. Martin

Dr. Thomas A. Mason and
Ms. Christine H. Guyonneau
Mr. and Mrs. Charles E. Mather III
Mr. Edward Mohylowski
Mr. and Mrs. Edman D. Norris
Mr. Gary S. Oaks
Dr. and Mrs. John P. O'Brien
Ms. Dorinda J. Oliver
Mr. and Mrs. Edward Parsons
Dr. Manning M. Pattillo, Jr.
Mrs. Jo Pennington
Mr. John A. Perry and
Mr. John Sistarenik
Ms. Beverly Persky
Mrs. Mary Alice Phelan
Mr. Robert A. Pittman
Mr. and Mrs. George D. Robison III
Mr. Ralph Rogers
Dr. and Mrs. Robert Sevier
Mr. and Mrs. Jan D. Slee
Mr. Noel Sloan
Mrs. Nancy K. Smith
Mr. and Mrs. Andrew L. Smith, Jr.
Mr. and Mrs. Harry C. Stahel
Mr. and Mrs. Thomas Straus
Mr. and Mrs. Hollister Sturges III
Mr. and Mrs. William H. Told, Jr.
Mr. and Mrs. Wallace Turner
Dr. Julia Churchill Van de Water
Mr. and Mrs. Peter Vaughn
Dr. Suzy M. Wakefield and
Mr. Jay S. Wakefield
Mr. and Mrs. Andrew Webster
Mr. and Mrs. James Wesner
Mr. and Mrs. Charles M. Whedbee
Mrs. Linda Defoor Wickham
Dr. and Mrs. Henry P. Williams III
Mr. and Mrs. Richard C. Wolfe

NATIONAL DONOR \$300 TO \$499

Mr. and Mrs. Herschel L. Abbott
Ms. Jacqueline Abrams
Mrs. Shirley Adler
Mr. and Mrs. Matt Arnold and
Linda Arnold
Mr. and Mrs. Christopher Baring
Ms. Sylvia Barnard
Ms. Roberta Benjamin
Mr. and Mrs. Lewis Bernstein
Mr. and Mrs. William Bliss
Mr. Scott Bobek
Mr. Paul T. Boghosian
Mr. Dale Edward Bond

Mrs. Sandra Bosley
Mr. and Mrs. John G.B. Boyd
Ms. Sandra Boyd
Ms. Alice M. Boyne
Mr. and Mrs. Bryant W. Bozarth
Mr. and Mrs. Charles R. Braley
Mr. Paul F. Bride
Dr. James B. Broadhurst
Dr. Robert Brody
Mr. and Mrs. Gene B. Brown
Ms. Elizabeth Anne Buzzell ASA FRSA
Mr. Gerald G. and Dr. Ann Cook Calhoun
Mr. and Mrs. Carlo Capomazza di Campolattaro
Mr. Basil Carpenter and Mr. Bruce Haefner
Mr. and Mrs. David B. Carter
Mr. and Mrs. William W. Caruth III
Mrs. Jackson L. Clagett and
Dr. Edward F. Doran
Mrs. Betty Clarke
Mr. and Mrs. James Clegg
Mr. James J. Coleman, Jr.
Mrs. Mary Ann Conn-Brody
Ms. Constance L. Cox
Mr. and Mrs. William L. Daisy
Mr. and Mrs. Robert DeFer
Mr. and Mrs. Arthur H. Dietz, Jr.
Mr. and Mrs. Lloyd H. Dixon
Ms. Ruth V. Doreck
Mr. Norman J. DuMouchelle and
Ms. Joan W. DuMouchelle
Mr. and Mrs. Prescott N. Dunbar
Ms. Saranne Durkacs
Mr. and Mrs. Loren Ekstrom
Mr. and Mrs. Tony Elms
Mr. Everett Engstrom
Mr. Marshall M. Erb
Ms. Susan A. Estabrook
Mr. Kevin A. Farrell
Mrs. Sallie Van Pelt Feild
Ms. Susan M. Ferris
Ms. Catherine Fishbach
Mr. Martin Gallagher
Mr. and Mrs. Peter Gentry
Ms. Susan J. Gerrity and
Mr. Edward Taffel
Mr. Robert Gienko, Jr.
Ms. Janet Glancy
Ms. Kimberly Gleeson
Rev. Joseph W. Goetz
Dr. and Mrs. John L. Gordon, Jr.
Mr. and Mrs. F. David Grissett
Mr. Robert H. Gunn, Jr.
Mr. and Mrs. Sen Gupta
Mr. William W. Harkins
Ms. Joy Harris
Dr. and Mrs. Thomas Herrin
Mrs. Sam B Hicks III
Ms. Trinidad Hidalgo
Mr. and Mrs. Peter H. Hill
Mr. and Mrs. George Hillard III
Ms. Nancy Adams Holliday
Mr. and Mrs. Jack D. Horner
Rev. and Mrs. Ernest E. Hunt

Mr. J. Mack Huston
Ms. Alice J. Irby
Ms. Carol Jablonsky
Dr. and Mrs. A. Charles Jackson, Jr.
Mr. and Mrs. Norbert Johnson
Ms. Judy Jolly
Dr. Dolores Jones
Mrs. Robert N. Joyner*
Mr. John Karel
Mrs. James P. Kiefer
Ms. Annette S. Kirby
Mr. and Mrs. Paul Kleine-Kracht
Dr. and Mrs. William J. Klopstock
Mr. and Mrs. Peter I. C. Knowles
Mr. Stephen C. Koch and
Ms. Aslana Deleon Delcour
Mr. Gregory C. Koch and
Ms. Patricia Ohtake
Mr. and Mrs. Rodney Koenig
Mrs. Gene S. Kosich
Mrs. John Peter Labouisse III
Mr. James T. Lang, Jr.
Dr. and Mrs. Gordon B. LeGrand
Mr. and Mrs. Edwin Deane Leonard
Mr. and Mrs. Rex W. Lerch
Ms. Yvonne R. Leveque
Mr. Mark Bennett Levine and
Mr. John H. Keppeler
Mr. Clyde Littlefield
Prof. M. Jill Lockwood and
Mr. Gregory Schmidt
Ms. Carol Losos
Ms. Helen Loyless
Mr. and Mrs. Niels P. Lyster
Mrs. John R. Mackroth
Mr. and Mrs. Wayne Maddox
Mr. and Mrs. Charles H. Maddrey
Mrs. Ruth M. Mader
Ms. Beth Madison
Ms. Marie Matthews
Dr. Rene McEldowney
Mr. Donald S. McKenzie
Dr. and Mrs. Lamar McMillin
Mr. and Mrs. Martin F. McNamara
Dr. Brian D. Melzian
Mr. and Mrs. Robert Miness
Mr. and Mrs. Bruce Mitchell
Mr. and Mrs. Rex Morris, Jr.
Dr. Laurence C. Morse and
Ms. Pamela McKoin
Mr. and Mrs. Clive Muncaster
Ms. Colleen Murphy
Mr. and Mrs. Bennet Muse
Mr. and Mrs. Martin Nance
Hon. and Mrs. G. Paul Nardo
Cmdr. Susan Merritt Nelsen
Mr. and Mrs. Philip C. Olsson
Col. H. David O'Malie
Mr. Clarke F. O'Reilly, Jr.
Ms. A. B. Orthwein
Mrs. Frank Padberg
Mrs. Ingrid Philbrick
Ms. Frances S. Pignone
Mrs. Jean B. Poole

Mr. J. Robert Pope
Mr. John N. Rampe and
Mrs. Elinore Evans
Mrs. Julia S. Rankin
Ms. Mary Reen
Mrs. Kathy Reiman
Mr. and Mrs. Charles Robinson
Mr. and Mrs. Daniel Rose
Mr. Ryan Ruskin and
Mr. Michael Andrews
Mr. and Mrs. John R. Sapp
Mr. and Mrs. Henry Schulhoff
Dr. Judith Meyer Schultz
Mr. and Mrs. Terry Scott
Mr. and Mrs. Terrance A. Secker
Mr. and Mrs. John O. Selvaige
Ms. Nora H. Shepard
Dr. and Mrs. George C. Shipley
Mr. and Mrs. Peter Siebert
Mr. and Mrs. Rex B. Simms
Mr. and Mrs. James Smith
Mr. and Mrs. Raymond J. Staffeldt
Mr. Ellsworth Stanton III MBE KSt.J
Mr. and Mrs. R. Curtis Steele
Mrs. Sarah Stephenson
Mr. and Mrs. David C. Stevens
Drs. Austin and Jane Sumner
Mrs. Janet K. Sutter
Mr. and Mrs. William G. Taylor III
Mr. and Mrs. David Taylor
Mr. and Mrs. W. Sloan Upton
Dr. Louise Valine
Mr. and Mrs. Brian J. Viner
Mr. and Mrs. Robert Austin Vinyard
Cedric W. Vogel, Esq.
Mr. and Mrs. J. Otey Walker III
Ms. JoAnn Wallace
Ms. Katherine K. Walls
Mr. and Mrs. John L. Warden
Mr. John Wat
Mr. and Mrs. Henry B. Watkins III
Mr. Charles W. Wharton III
Ms. Barbara G. Willette
Mr. and Mrs. James A. Williford II
Prof. Elaine Orr Wise
Mrs. Carolyn S. Worrell
Mr. and Mrs. William G. Youngblood

*deceased

With Thanks

The English-Speaking Union gratefully acknowledges these donors whose financial contributions, pledge payments and new pledges between July 1, 2015 and June 30, 2016 advance the work of the ESU:

\$75,000 AND ABOVE

The Hearst Foundation, Inc.
Foundation to Promote Open Society
Mr. Andrew Romy

\$10,000 TO \$74,999

Fairview Capital Partners
Dr. Laurence C. Morse &
Ms. Pamela McKoin

\$5,000 TO \$9,999

Axe-Houghton Foundation
Bristol-Myers Squibb Foundation
Mr. Charles T. Munger/CNC Foundation
Mr. Paul J. Haigney
Robert & Ardis James Foundation
F. M. Kirby Foundation, Inc.
The Mountbatten Institute
Henry E. Niles Foundation

\$1,500 TO \$4,999

Richard D. Donchian Foundation
Mr. and Mrs. Philip C. Olsson
Ponant Cultural Cruises and Expeditions
Herb and Ann Rowe
Charitable Foundation
Joseph S. & Louise B. Rumbaugh
Fund of the Community Foundation
of Broward

\$1,000 TO \$1,499

Mr. Richard Anderson
The Richard Anderson Charitable Fund
Central Florida Branch of the ESU
Mr. and Mrs. Thomas E. Doughty, Sr.
Dean S. Edmonds Foundation
Ms. Cynthia Fields
Mr. Karl D. Jackson
New Orleans Branch of the ESU
New York Branch of the ESU
The Shakespeare Society, Inc.
Ms. Jeanne S. Umstattd

\$500 TO \$999

Mr. & Mrs. Curtis F. Brockelman
Mr. & Mrs. Guy B. Dixon
Mr. & Mrs. Robert L. Farmer
Dr. Henry E. Flanagan, Jr.
Lexington Branch of the ESU
Ms. Ellen Maybank
Stevenson School
Mr. & Mrs. Dan Van Horn

Mr. Stanislav Vasilev
Johns S. Watterson
Watterson Foundation
Mrs. Alison Griscom Wilson

Albany Branch of the ESU
Mr. Robert Bauchner
Mr. Donald A. Best/The Lendon Best
Charitable Gift Fund
Mr. Stuart J. Bloomberg
Boston Branch of the ESU
Mr. Guy A. Bramble
Mr. Peter Buffington
Mr. & Mrs. Gary T. Capen
Capen Family Fund
M. Christine Carty Esq.
Mr. Charles E. Clapp III
Mr. G. Garrett Davis
Mr. & Mrs. Frederick Eaton
Mr. Charles S. Gardner III
Ms. Betty Gerstein
Mr. & Mrs. Robert Grant
Mr. & Mrs. Richard B. Hatfield
Mr. Jonathan S. Linker
Dr. Christopher Medalis
Mrs. Payne W. Middleton
Ms. Mary Ann Moran &
Ms. Katharine Moran
Mr. James M. Myers
Mrs. Leslie H. Newman
Mr. Lawrence Raymond
Mr. Christopher W. Rogers
Dr. Donald J. Rosato/Dr. Donald J.
Rosato Charitable Fund
Mr. Whitney G. Saunders
Mr. Alvin Schexnider
Dr. Annette C. Smith
Mr. Ethan B. Stanley II
Dr. David J. Steinberg
Abbot & Dorothy H. Stevens
Foundation
Mr. & Mrs. John Strawbridge
Hon. Alexander F. Treadwell
Mr. & Mrs. Bruce Vogt
Dr. LaTonya Ware
J. W. Thomson Webb, Esq.
Ambassador & Mrs. Robert Weisberg
Mr. Seth W. Whitaker
Mr. James W. Wickenden
Mrs. Joy Wiener
Dr. Asa G. Yancey
Mr. & Mrs. J. Warren Young

\$200 TO \$249

Dr. Mary Elizabeth Alexander
Mary Elizabeth Alexander Account
of the Fidelity Charitable Gift Fund
Mr. Roger S. Core
Mr. Christopher J. Cull
Mr. Howard E. Eisenstein
GE Foundation
Mr. & Mrs. John Gorczynski
Ms. Rosalyn Harber
Mr. Brian Hickey
Dr. & Mrs. A. Charles Jackson, Jr.
Ms. Marjorie L. Kennedy
Mr. & Mrs. Brock R. Landry
Ms. Gloria A. Lavery
Mr. Curtis J. Mann
Mr. Michael Miller
Mrs. Christine B. Morse
The Iva & Jerome Preston
Charitable Trust
Princeton Branch of the ESU
Mr. Robert Redfield
Dr. Jill Richardson
Mr. Lawrence F. Schiller
Dr. & Mrs. Robert A. Stauffer
Tucson Branch of the ESU

\$100 TO \$199

Mr. & Mrs. Dunbar J. Abston, Jr.
Mrs. Beverly Albert
Mr. Daniel O. Anderson
Ms. Wendy Baker
Mr. Stephen P. Bartlett
Mr. & Mrs. David P. Bennett III
Miss Josephine C. Blue
Mr. Ronald H. Blumer
Ms. Alice M. Boyne
Mr. Peter W. Broer
Dr. Gregory William Buck
Mrs. Dulcie Bull
Ms. Margaret Y. Burden
Mr. David L. Calfee
Dr. Ann Cook Calhoun
Mr. A. B. Campbell
Ms. Ann Cerrone
Mr. Stephen F. Christy
Mr. Thomas Connell
Dr. Loveday L. Conquest &
Mr. Fred Kleinschmidt
Mrs. Patricia A. Curran
Mrs. Joy Wiener
Ms. Ellen B. Cutler &
Mr. Daniel Tamkus

Dr. Peter R. Decker
Ms. Catherine Dinehart
Mr. James M. Donohue
Miss Catharine-Mary Donovan
Mr. & Mrs. Adam M. Drimer
Ms. Edith Baird Eglin
Mrs. Barbara L. Ettinger
Mr. Robert Peter Fichter
Ms. Eleanor Fink
Mr. Simon J. Frankel
Dr. Leonardo J. Galletto
Ms. Sarah D. Gillespie
Mr. Thomas P.I. Goddard
Mr. Thomas P. Gordon
Dr. & Mrs. Albert C. Gordon
Mr. Charles L. Grant
Mr. James D. Gundell
Ned Gurevich
Mr. J.K. Hage
Dr. Warren G. Hall
Dr. W. Mark Hamilton
Mr. Paul W. Hanley
Ms. Bonnie K. Harkness
Mr. & Mrs. Robert L. Hickey
Ms. Kathleen M. Hitchcock
Mr. Samuel C. O. Holt
Mr. Hugh Hysell
Jacksonville Branch of the ESU
Mr. & Mrs. Eckess Jones
Mr. & Mrs. Timothy E. Kelley
Mr. Stuart H. Kerr
Ms. Carolyn E. Kimball
Ms. Marilyn Kinney
Maj. Gen. & Mrs. John W. Knapp
Ms. Daria Pace Lamb
Mr. & Mrs. Charles Langston
Ms. Sheila W. Leith
Mr. Dane Lemeris
Mr. & Mrs. Lanneau D. Lide, Jr.
Mr. Richard B. Lightfoot
Mr. Wingate Lloyd/ Wingate Lloyd Fund
of the Fidelity Charitable Gift Fund
Dr. Peter B. Lyon
Mr. & Mrs. Brent Malcolm
Mr. & Mrs. Sheldon B. Margolis
Mr. William B. Maschmeier
Mr. Marsh McCall
Mr. William H. McClendon, III
Dr. Robert C. McCloud
Mr. & Mrs. Bernard McElhone
Mr. Francis W. McMillan

Mrs. Donna M. Miller
Dr. Langdon L. Miller
Mr. Edward Mohylowski
Mr. & Mrs. Rex Morris, Jr.
Mrs. Thaddeus Moseley
Ms. Lourdes Nyffeler
Mr. & Mrs. W.H. Odell
Mr. William H. Painter
Town of Palm Beach United Way Inc.

Dr. Donald M. Pattillo
Mr. Robert S. Perkin
Mrs. K. Jean Pokress
Mr. Douglas R. Purdy
Mr. James M. Reilly
Ms. Sally Richards
Mr. & Mrs. John T. Rochford
Mr. & Mrs. Philip Rohrbach
Ms. Frances Rothenberg
Mr. Peter H. Seed
Mr. Robert B. Semple
Mr. Kevin Seymour
Mr. Bejan Shirvani
Mrs. Kuniko Silverstein
Mr. & Mrs. Steven J. Simons
Ms. Shelagh Kiley Smith
Mrs. Nancy K. Smith
Southwest Virginia Branch of the ESU
Mr. Paul H. Steen
Dr. David B. Stoll
Mr. Gifford Thomas
Mrs. Marie Dora Thornburg OBE
Mr. Peter D. Weigl
Ms. Astrid C. Werner
Cmdr. Walter J. Whitley
Ms. Robin Woodard
Mr. Robert G. Young

UNDER \$100

Mr. & Mrs. Sidney A. Adair
Mr. John W. Ager III
Dr. LaLisa A. Anderson
Ms. Susanne Anholt
Ms. Wendy Baker
Mr. Paul J. Barringer
Dr. & Mrs. Edmund S. Bartlett
Ms. Johnna G. Barto
Mr. & Mrs. Hawthorne Dill Battle
Mr. Anthony Beals
Ms. Tina Bivona
Mr. Rami Blair
Mr. & Mrs. John D. Blair
Mr. W. Douglas Bond
Mr. David B. Brawer
Mrs. Josephine T. Brown
Ms. Betty Burdick
Mr. John B. Calfee, Jr.
Ms. Terry Canter
Ms. Betty R. Carter
Ms. Maxine B. Carter

Mr. & Mrs. Nicholas Classen
Mr. William C. Coe, Jr.
Mr. & Mrs. W. Graham Cole
Mr. & Mrs. H. Calvin Cook
Mr & Mrs Jonathan Crocker
Mrs. Gretchen Crow
Mr. Stephen Culberston,
Ms. Colleen Cusick-Endick
Mr. William M. Davis
Mr. John C. Diamante
Mr. & Mrs. John M. Doggett, Jr.
Miss Catharine-Mary Donovan
Ms. Anne Marie Eanes
Mr. & Mrs. Charles Edson
Mr. Peter B. Elliott
Mr. John W. Ewell
Mr. Desmond J. FitzGerald
Ms. LuAnn Fogg
Ms. Betty Franklin
Mr. John Graham
Mr. & Mrs. William Hartnett
Mr. Jerome Helm
Mrs. Richard M. Herndon
Ms. Robin Hicks &
Mr. Tracy Campbell
Dr Michael D. Hill
Mr. & Mrs. Darrell Winston Hill
Ms. Nadine N. Holloway
Ms. Beverly Hunter-Daniel
Mr. Charles E. Huntington
Mr. & Mrs. Thomas H. Huss
Ms. Janice Jacobs
Mr. John W. R. Jenkins
Mr. C. Owen Johnson
Mr. Robert L. Johnston
Ms. Christine Jones
Prof. Hannah Joyner
Mr. T. Paul Kane
Ms. Gloria C. Kline
Dr. & Mrs. William J. Klopstock
Mr. Jonathan A. Kosterlitz
Mr. & Mrs. Kevin Kwiat
Mr. Robert C. Lanphier III
Mr. Colin Lasko
Mr. & Mrs. H. Pettus LeCompte
Ms. Lakesha C. Lee
Ms. Rhona A. Lipton
Mr. Victor Longo
Dr. & Mrs. James Lowder
Mr. Donald C. Lucas
Robert H. Lugg
Ms. Margaret Lynch
Mr. & Mrs. Stephen D. Marvin
Mr. & Mrs. John McCarthy
Mr. & Mrs. William H. McConnell
Dr. J. Kenneth McDonald
Mr. Arthur M. McGlaflin
Mr. & Mrs. Thomas B. McGowan
Mr. Easton T. McMahon

Mrs. Susan M. Melfi
Mr. Sean E. Mickens
Ms. Laura B. Millar
Ms. Melissa Mishoe
Mrs. Reva Moore
Mr. Jay Carmody Morley
Mr. Terry Neugesser
Ms. Beata Newman Scarpulla
Mr. Gary S. Oaks
Ms. Anne O'Brien
Col. H. David O'Malie
Mr. & Ms. Magne Ostby
Ms. Fiona Otten
Mr. & Mrs. Wesley F. Palmer
Mr. & Mrs. Edward Parsons
Mr. James A. Peden, Jr.
Mr. & Mrs. John Peterson
Ms. Taylor Peterson
Ms. Joan E. Ploth
Mr. & Mrs. Davenport Plumer III
Mrs. Jean B. Poole
Mr. Anthony C.E. Quainton
Mr. David T. Ralston
Mr. Patrick J. Robert
Mrs. Gloria A. Roberts
Mrs. Gloria A. Roberts
Mrs. Sandra Rogers

Mr. & Mrs. Daniel B. Rowland
Mr. Donald L. Russell
Mrs. Edward Schnuck
Mr. Peter Schram
Hon. Patricia S. Schroeder,
Ms. Elizabeth A. Schultz
Ms. Suzanne M. Shevlin
Ms. Patricia Simpson
Mr. James F. Smith
Ms. Elizabeth D. Smith
Dr. & Mrs. Abbott Smith
Ms. Kristin Stewart
Mr. Stanley Sutkowski
Dr. & Mrs. Owen Tabor
Mrs. Fred Tarkington
Mr. Radclyffe F. Thompson
Mr. John M. Trask
Mr. Bradley D. Truel &
Mrs. Patricia J. Truel
Mr. Harry Ullmann
Mr. Russell E. Watson
Mr. Charles H. Welles
Mr. & Mrs. Robert Willenkin
Ms. Patti Williams
Ms. Lisa Williams
Mr. Martin Wilson
Ms. Nancy Zarovsky



Legacy Society

Special thanks to those who have
included the ESU in their estate plans.

Mr. Richard T. Biernacki &
Dr. David G. Henritz

Mr. & Mrs. Josiah Bunting III

Dr. & Mrs. James P. Fadely

Mr. Darrell W. Hill &
Ms. Anisha McFarland

Ms. Alice J. Irby

Mr. & Mrs. H. Pettus LeCompte

Mr. William Brewer Maschmeier &
Ms. Patricia Ann Haggerty

Mr. & Mrs. Robert P. Morse

Dr. E. Quinn Peeper &
Mr. Michael D. Harold

Ms. Barbara G. Willette

Dr. & Mrs. Henry P. Williams III

Financial Report

Condensed Statement of Activities

unaudited

For the year ending June 30, 2016

OPERATING REVENUES

Private support	\$ 719,492
Earned revenue	977,591
Investment return used for operations	628,584
Contributed goods and services	52,500
Investments released from restrictions	70,700

TOTAL OPERATING REVENUES \$ 2,448,867

OPERATING EXPENSES

Program Services

Membership and branch services	\$ 650,053
New immigrant language services	577,851
Shakespeare programs	236,190
Educational exchange programs	355,134
Other educational services	81,612

Total Program Services \$ 1,900,840

Supporting Services

Management and general	\$ 413,267
Fundraising	134,760

Total Supporting Services \$ 548,027

TOTAL OPERATING EXPENSES \$ 2,448,867

Excess Operating Revenues
over Operating Expenses —

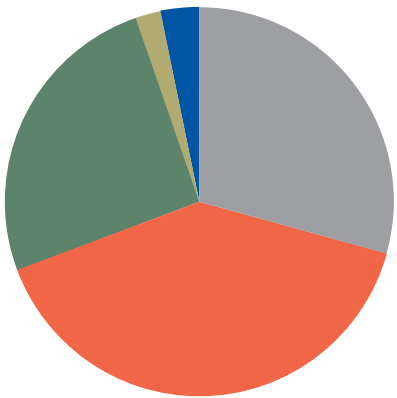
Endowment, investments, capital
and other non-operating activities 12,164,728

Increase (decrease) in Net Assets (867,321)

NET ASSETS AT BEGINNING OF YEAR \$16,479,939

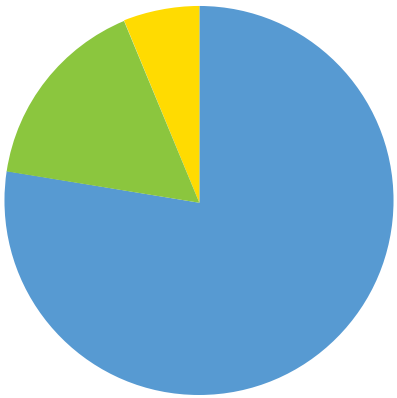
NET ASSETS AT END OF YEAR \$ 15,612,939

Complete financial statements are available on our website:
www.wsuus.org/about/financial_statements/



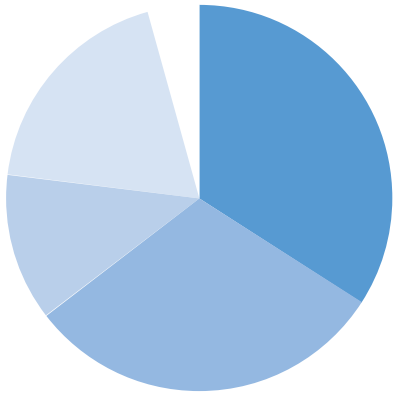
Operating Revenues

Private support	29%
Earned revenue	40%
Investment return used for operations	26%
Contributed goods and services	2%
Investments released from restrictions	3%



Operating Expenses

Program Services	78%
Management and general	17%
Fundraising	6%



Program Services

Membership & branch services	34%
New immigrant language services	30%
Shakespeare programs	12%
Educational exchange programs	19%
Other educational services	4%



ESU Board & Staff

The English-Speaking Union of the United States
Officers and Board of Directors, June 30, 2016

OFFICERS:

Dr. Paul Beresford-Hill CBE KSt.J., Purchase, NY
Laura J. Phelps*, Vice Chair, Santa Cruz, CA
Dr. E. Quinn Peeper*, President, New Orleans, LA
Hollister Sturges*, Treasurer, Greenwich, CT
Christopher Broadwell, Secretary of the Corporation, New York, NY
William R. Miller CBE KSt.J., Chairman Emeritus, New York, NY
Marie Dora Thornburg OBE*, President Emerita, Chicago, IL

REGIONAL CHAIRS:

Jan D. Slee, Region I, Newport, RI
Dr. Susan (Robin) D. Sinclair, Region II, Nashville, TN
Dr. Karen Blair-Brand, Region III, State College, PA
Ellen LeCompte, Region IV, Richmond, VA
Mary Alice Phelan, Region V, Jacksonville, FL
Jeffrey L. Schnabel, Region VI, Kansas City, MO
Judge James W. Kerr, Jr., Region VII, Dallas, TX
William B. Maschmeier, Region VIII, Seattle, WA

DIRECTORS AT LARGE:

Donald Best, San Francisco / Los Angeles, CA
M. Christine Carty Esq.*, New York, NY
Dr. Loveday Conquest, Seattle, WA
Polly W. Cox*, Denver, CO
Peter F. Frey, New York, NY
Paul J. S. Haigney, San Francisco, CA / Boston, MA
Julia Hansen, Palm Beach, FL
Darrell W. Hill*, Chicago, IL
Dr. Christopher Hodgkins*, Greensboro, NC
Dr. Christopher Medalis, New York, NY
Donna M. Miller, Oviedo, FL
Charles D. Reaves Esq., Memphis, TN
Philip A. Sjogren, Boston, MA
Roger F. Stacey, Cambridge, MA
George T. Williamson, Palm Beach, FL / Richmond, VA

*Executive Committee members

ESU STAFF

Christopher Broadwell, Executive Director
Steven Aguirre, Bookkeeper
Ariana Alexander-Sefre, Mountbatten Intern
Dorothy Fiedler, Assistant to the Executive Director
Kemi Gannon, Mountbatten Intern
Grant Hamel, Operations Manager
Karl Hart, Education Assistant
Joshua Keppel-González, Branch Communications Coordinator
Carol Losos, Director of Education
Edward Mohylowski, Deputy Executive Director
Kathryn Morrisett, Membership and Database Manager
Mary Nicoll, Coordinator of Speaker Programs
Tanzilya Oren, Manager, The Andrew Romay New Immigrant Center
Karen Ruelle, Manager, English in Action
Katharine Strobel, Manager, Shakespeare Education Programs
Alice Uhl, Manager, International Programs
Noel Williamson, Custodian



The English-Speaking Union

144 East 39th St. | New York | NY 10016

Annual Report 2016

English in Action



The English-Speaking Union

English in Action

www.esuus.org